

THC and Metabolite in Plasma by LC/MS/MS on Gemini C18 5µm 50 x 3.0

Column: Gemini® 3 µm C18 110 Å, LC Column 50 x 3 mm, Ea

Dimensions: 50 x 3 mm ID

Order No: 00B-4439-Y0

Elution Type: Gradient

Eluent A: 10mM NH₄HCO₃ (pH 10)

Eluent B: Acetonitrile

Gradient Profile:	Step No.	Time (min)	Pct A	Pct B
	1	0.1	85	15
	2	3	5	95
	3	3.5	5	95
	4	3.6	85	15
	5	4.1	85	15

Flow Rate: 0.8 mL/min

Col. Temp.: ambient

Detection: Mass Spectrometer (MS) @ amu (450 °C)

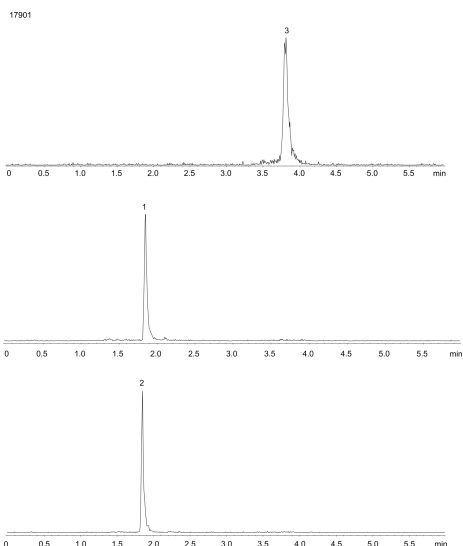
Analyst Note: SecurityGuard™ Guard Cartridge System extends column lifetime.

- SecurityGuard Cartridges, Gemini C18 4 x 2.0mm, 10/Pk Part No.: AJ0-7596

- Holder Part No.: KJ0-4282



Products used in this application:



ANALYTES:

- 1 11-nor-9-Carboxy-THC (THC-COOH)
- 2 delta-9-tetrahydrocannabinol-d3 (THC)
- 3 delta-9-tetrahydrocannabinol (THC)

