

Biogenic Amines in Fish and Fish Products According to § 35 LMBG

Column: Gemini® 5 µm NX-C18 110 Å, LC Column 250 x 4.6 mm, Ea

Dimensions: 250 x 4.6 mm ID

Order No: 00G-4454-E0

Elution Type: Gradient

Eluent A: Water + 100 mM NaOAc, pH 4.5 + 10 mM Sodium 1-octanesulfonate

Eluent B: Water + 155 mM NaOAc, pH 4.5 + 10 mM Sodium 1-octanesulfonate / ACN (77:23)

Gradient Profile:	Step No.	Time (min)	Pct A	Pct B
	1	0	80	20
	2	20	60	40
	3	28	25	75
	4	34	25	75
	5	34.1	0	100
	6	50	0	100
	7	50.1	80	20
	8	60	80	20

Flow Rate: 1 mL/min

Col. Temp.: 20 °C

Detection: Fluorescence (FLUOR) @ 330 nm (20 °C)

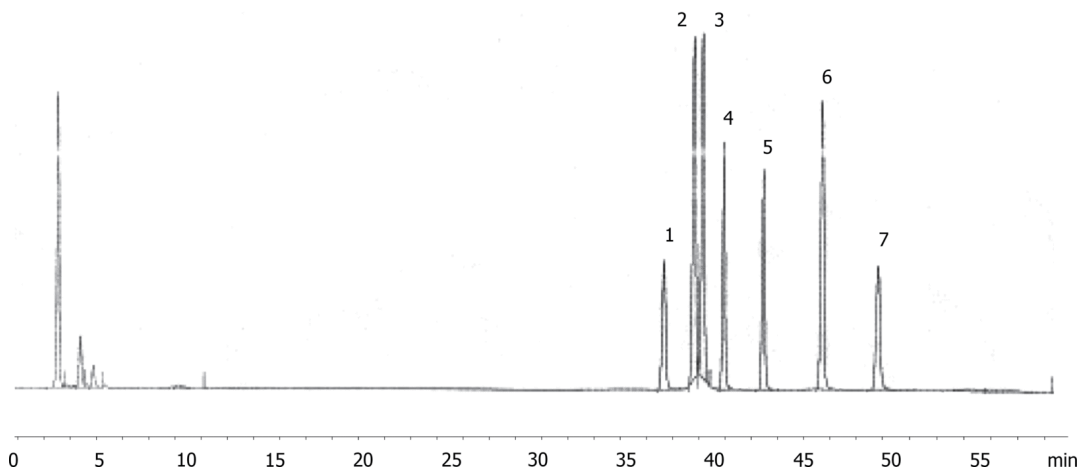
Detector Info: Online post-column derivatization with OPA

Analyst Note: The application was kindly provided by the Amt für Verbraucherschutz in Mettmann, Germany.

17911



Products used in this application:



ANALYTES:

- 1 Tyramine
- 2 Putrescine
- 3 Cadaverine
- 4 Histamine
- 5 Agmatine
- 6 Spermidine
- 7 Spermine

