

HPLC Application

ID No.: 17912

EPA Method 8330: Explosive Mix Using Synergi Hydro-RP

Column: Synergi[™] 4 μ m Hydro-RP 80 \AA , LC Column 250 x 4.6 mm, Ea

Dimensions: 250 x 4.6 mm ID

Order No: 00G-4375-E0

Elution Type: Gradient

Eluent A: Methanol

Eluent B: Water

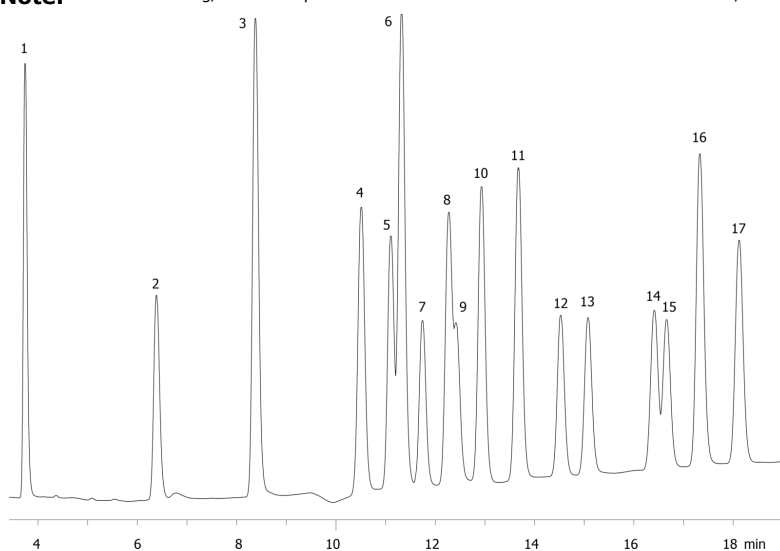
Gradient Profile:	Step No.	Time (min)	Pct A	Pct B
	1	0	55	45
	2	2	55	45
	3	22	75	25
	4	22.01	55	45
	5	25	55	45

Flow Rate: 1 mL/min

Col. Temp.: 25 $^{\circ}$ C

Detection: UV-Vis Abs.-Variable Wave.(UV) @ 220 nm (ambient)

Analyst Note: 100ul of 100ug/ml 17 component mix was diluted with 900ul of 50:50 Methanol/water



EPA Method 8330: Explosive Mix Using Synergi Hydro-RP

ANALYTES:

- 1** Octahydro-1,3,5,7-tetranitro-1,3,5,7-tetrazocine (HMX)
- 2** Hexahydro-1,3,5-trinitro-1,3,5-triazine
- 3** 1,3,5-Trinitrobenzene
- 4** Methyl-2,4,6-trinitrophenylnitramine (Tetryl)
- 5** 1,3-Dinitrobenzene
- 6** Nitrobenzene
- 7** Nitroglycerin
- 8** 2,4,6-Trinitrotoluene
- 9** 3,5-Dinitroaniline
- 10** 4-Amino-2,6 dinitrotoluene
- 11** 2 Amino-4,6 dinitrotoluene
- 12** 2,6-Dinitrotoluene
- 13** 2,4-Dinitrotoluene
- 14** Pentaerythritol tetranitrate
- 15** 2-Nitrotoluene
- 16** 4-Nitrotoluene
- 17** 3-Nitrotoluene

