

Hormones/Steroids by MSD on a ZB-Drug-1

Column: Zebtron[™] ZB-Drug-1, GC Cap. Column 10 m x 0.18 mm x 0.18 µm, Ea

Phase: Proprietary Drug Phase

Dimensions: 10 meters x 0.18 mm x 0.18 µm

Order No: 7CD-G023-08

Oven Profile: 200 °C to 320 °C @ 15 °C/min for 2 min

Carrier Gas: Constant Flow Helium, 0.7 mL/min

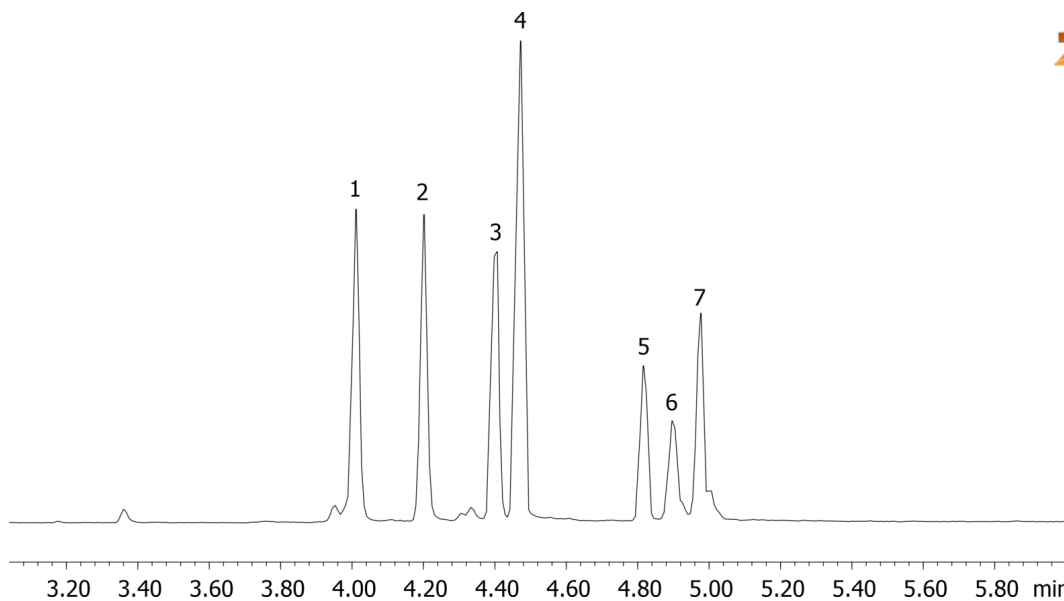
Injection: Split 100:1 0.2 µL @ 280°C

Detection: Mass Selective (MSD) (320°C)

Analyst Note: Analytes are 100ppm oxime-TMS derivatized



Products used in this application:



ANALYTES:

- 1 Androsterone
- 2 17-alpha-Estradiol
- 3 DHEA
- 4 17-beta-Estradiol
- 5 Testosterone
- 6 Testosterone
- 7 Estrone

