

## Hormones/Steroids by MSD on a ZB-5MSi

**Column:** Zebtron<sup>™</sup> ZB-5MSi, GC Cap. Column 10 m x 0.18 mm x 0.18 μm, Ea

**Phase:** 5% Phenyl 95% Dimethylpolysiloxane

**Dimensions:** 10 meters x 0.18 mm x 0.18 μm

**Order No:** 7CD-G018-08

**Oven Profile:** 200 °C to 280 °C @ 10 °C/min

**Carrier Gas:** Constant Flow Helium, 0.7 mL/min

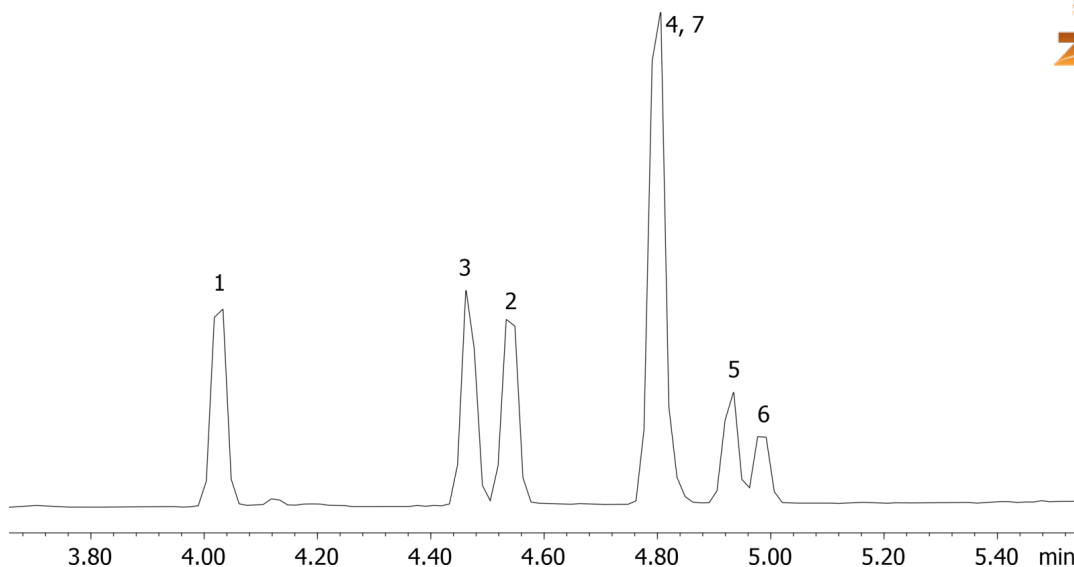
**Injection:** Split 50:1 0.5 μL @ 260°C

**Detection:** Mass Selective (MSD) (320°C)

**Analyst Note:** Analytes are 100ppm oxime-TMS derivatized



Products used in this application:



### ANALYTES:

- 1 Androsterone
- 2 17-alpha-Estradiol
- 3 DHEA
- 4 17-beta-Estradiol
- 5 Testosterone
- 6 Testosterone
- 7 Estrone

