

# HPLC Application

ID No.: 17970

## Plasma Metanephrines by LC/MS/MS on Luna HILIC following SPE with Strata-X-CW

**Column:** Luna® 3 µm HILIC 200 Å, LC Column 50 x 2 mm, Ea

**Dimensions:** 50 x 2 mm ID

**Order No:** 00B-4449-B0

**Elution Type:** Gradient

**Eluent A:** ACN/100mM Ammonium Formate, pH 3.2 (95:5)

**Eluent B:** ACN/Water/100mM Ammonium Formate, pH 3.2 (50:45:5)

Gradient Profile:	Step No.	Time (min)	Pct A	Pct B
	1	0	100	0
	2	2.51	0	100
	3	3.01	100	0
	4	6	100	0

**Flow Rate:** 0.4 mL/min

**Col. Temp.:** ambient

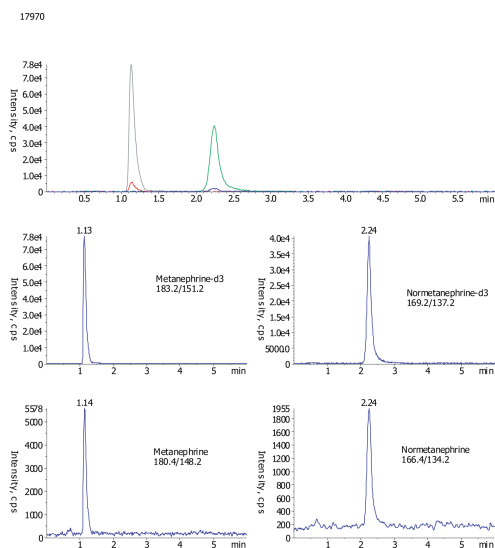
**Detection:** Mass Spectrometer (MS) @ amu (ambient)

Detector Info:	Analyte	MRM Pair
		(Q1/Q3)
	MN	180.4/148.2
	MN-D3	183.4/151.2
	NMN	166.4/134.2
	NMN-D3	169.4/137.2

- Analyst Note:** SecurityGuard™ Guard Cartridge System extends column lifetime.
- SecurityGuard Cartridges, HILIC 4 x 2.0mm, 10/Pk Part No.: AJ0-8328
  - Holder Part No.: KJ0-4282



Products used in this application:



## Plasma Metanephrines by LC/MS/MS on Luna HILIC following SPE with Strata-X-CW

### ANALYTES:

- 1 Metanephrine
- 2 Metanephrine-d3
- 3 Normetanephrine
- 4 Normetanephrine-d3

