

Blood Alcohols on ZB-BAC-1

Column: Zebron[™] ZB-BAC-1, GC Cap. Column 30 m x 0.53 mm x 3.00 μ m, Ea

Phase: Proprietary Blood Alcohol Phase

Dimensions: 30 meters x 0.53 mm x 3 μ m

Order No: 7HK-G021-36

Oven Profile: 40 °C Isothermal

Carrier Gas: Constant Flow Helium, 80 cm/sec

Injection: Split 0.8:1 1 μ L @ 150°C

Detection: Flame Ionization (FID) (250°C)

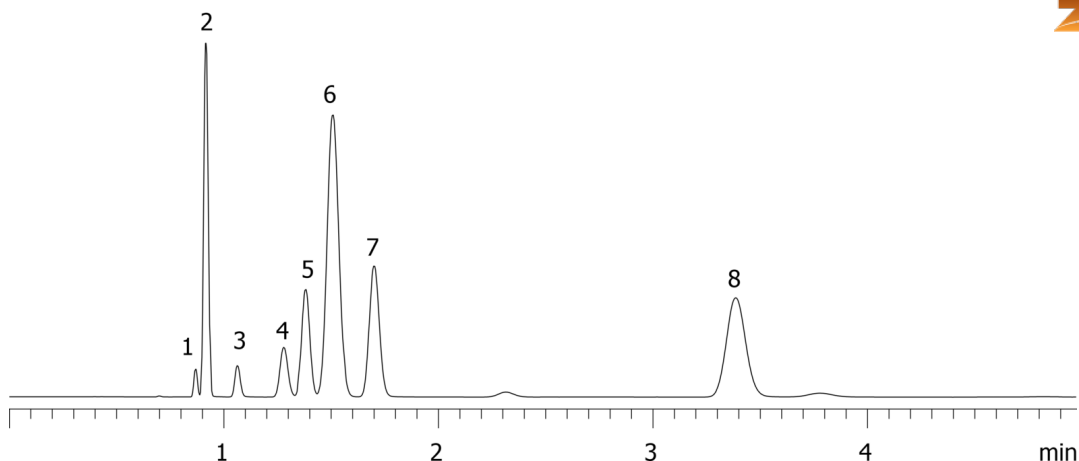
Analyst Note: Analytes 0.025% and internal standards 0.100% in water



Products used in this application:



17982



ANALYTES:

- 1 Methanol
- 2 Acetaldehyde
- 3 Ethanol
- 4 Isopropanol
- 5 Acetone
- 6 t-Butanol
- 7 n-Propanol
- 8 2-Butanol

