

# GC Application

ID No.: 18021

## Methadone from urine by Screen C on a ZB-Drug1

**Column:** Zebtron™ ZB-Drug-1, GC Cap. Column 10 m x 0.18 mm x 0.18 μm, Ea

**Phase:** Proprietary Drug Phase

**Dimensions:** 10 meters x 0.18 mm x 0.18 μm

**Order No:** 7CD-G023-08

**Oven Profile:** 180 °C to 320 °C @ 25 °C/min for 1 min

**Carrier Gas:** Constant Flow Helium, 55 cm/sec

**Injection:** Split 20:1 1 μL @ 280°C

**Detection:** Mass Selective (MSD) (320°C)

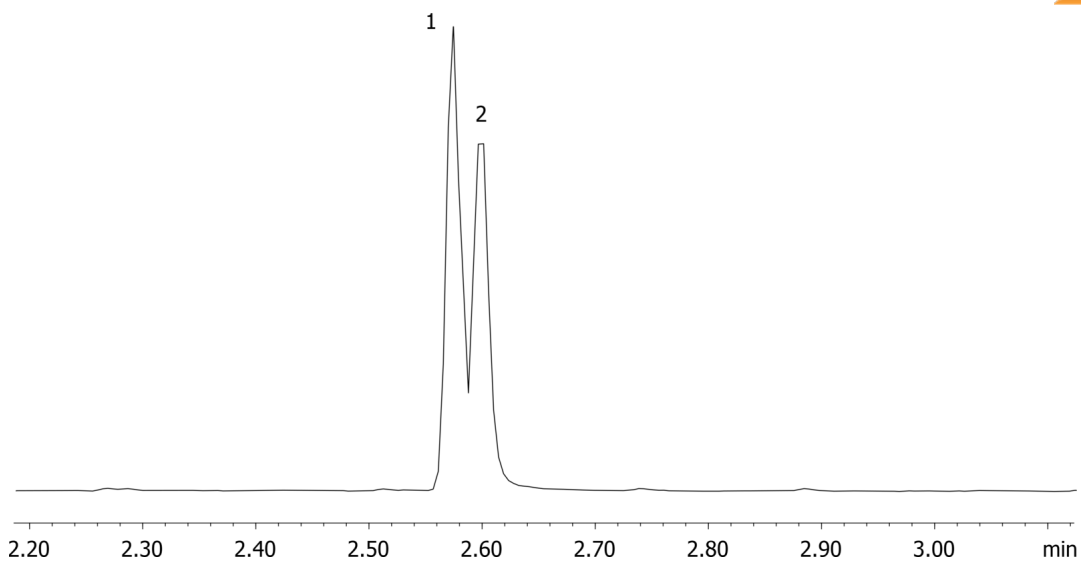
**Analyst Note:** Analytes are 300ng/mL in urine  
Sim ions:  
(Quant ion\*) D9-Methadone (\*78,303): Methadone (\*72,294,223)



Products used in this application:



18021



### ANALYTES:

- 1 Methadone-d9
- 2 Methadone

