

# GC Application

ID No.: 18022

## 6-MAM from urine by Screen C on a ZB-Drug1

**Column:** Zebtron™ ZB-Drug-1, GC Cap. Column 10 m x 0.18 mm x 0.18 μm, Ea

**Phase:** Proprietary Drug Phase

**Dimensions:** 10 meters x 0.18 mm x 0.18 μm

**Order No:** 7CD-G023-08

**Oven Profile:** 200 °C to 300 °C @ 20 °C/min

**Carrier Gas:** Constant Flow Helium, 0.7 mL/min

**Injection:** Split 10:1 1 μL @ 260°C

**Detection:** Mass Selective (MSD) (300°C)

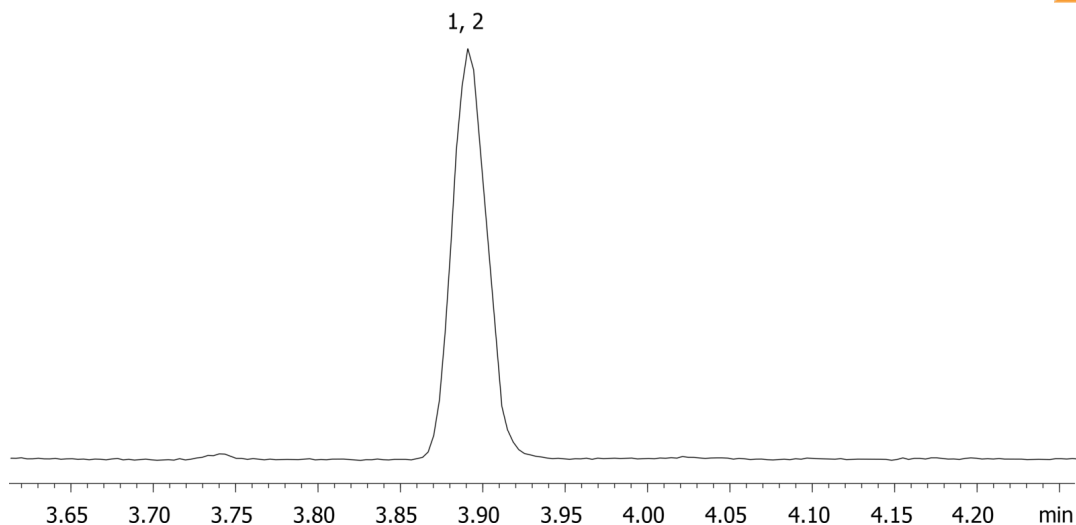
**Analyst Note:** Analytes are 10ng/mL in urine derivatized with BSTFA  
Sim ions:  
(Quant ion\*) D3-6-MAM (\*402,403): 6-MAM (\*399,400,340)



Products used in this application:



18022



### ANALYTES:

- 1 6-MAM-d3
- 2 6-MAM

