

GC Application

ID No.: 18024

Carboxy-THC from urine by Screen C on a ZB-Drug1

Column: Zebtron™ ZB-Drug-1, GC Cap. Column 10 m x 0.18 mm x 0.18 µm, Ea

Phase: Proprietary Drug Phase

Dimensions: 10 meters x 0.18 mm x 0.18 µm

Order No: 7CD-G023-08

Oven Profile: 220°C to 320°C @ 20 °C/min for 5 min

Carrier Gas: Constant Flow Helium, 55 cm/sec

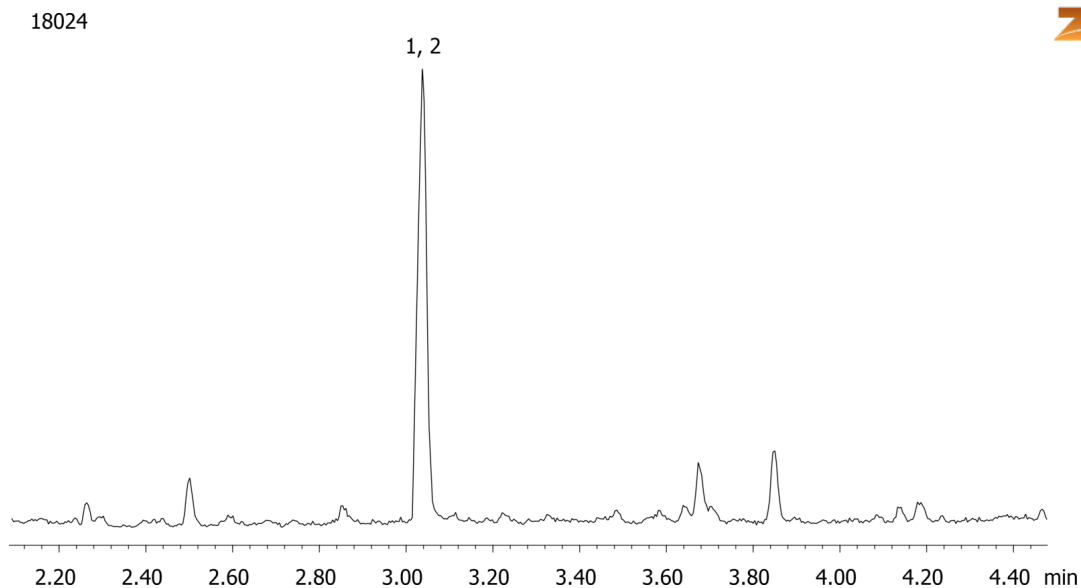
Injection: Split 10:1 1 µL @ 280°C

Detection: Mass Selective (MSD) (320°C)

Analyst Note: Analytes are 15ng/mL in urine derivatized with BSTFA
Sim ions:
(Quant ion*) D3-Carboxy-thc (*374,476,477): Carboxy-thc (*371,473,474)



Products used in this application:



ANALYTES:

- 1 Carboxy-THC-d3
- 2 Carboxy-THC

