

Opiates from urine by Screen C on a ZB-Drug1

Column: Zebtron™ ZB-Drug-1, GC Cap. Column 10 m x 0.18 mm x 0.18 μm, Ea

Phase: Proprietary Drug Phase

Dimensions: 10 meters x 0.18 mm x 0.18 μm

Order No: 7CD-G023-08

Oven Profile: 180 °C to 320 °C @ 25 °C/min for 1.4 min

Carrier Gas: Constant Flow Helium, 0.7 mL/min

Injection: Split 10:1 1 μL @ 280°C

Detection: Mass Selective (MSD) (320°C)

Analyst Note: Analytes are 2000 ng/mL in urine derivatized with BSTFA

Sim ions:

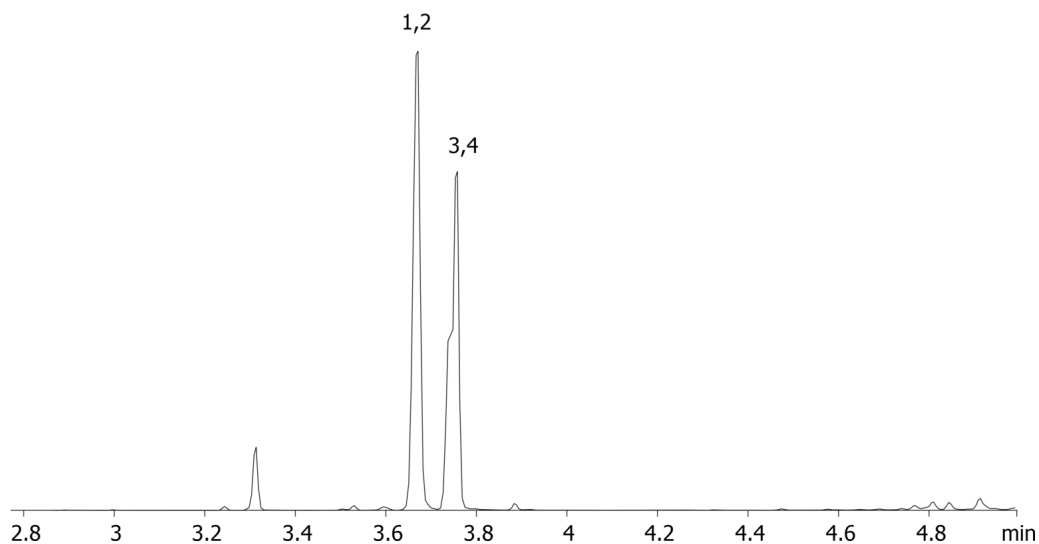
(Quant ion*) D6-Codeine (*377,349): Codeine (*371,343,234): D3-Morphine (*432,417): Morphine (*429,414,401)



Products used in this application:



18035



ANALYTES:

- 1 Codeine-d6
- 2 Codeine
- 3 Morphine-d3
- 4 Morphine

