

Expanded amphetamines and interferences including TFMPP by MSD on a ZB-Drug1

Column: Zebtron™ ZB-Drug-1, GC Cap. Column 10 m x 0.18 mm x 0.18 μm, Ea

Phase: Proprietary Drug Phase

Dimensions: 10 meters x 0.18 mm x 0.18 μm

Order No: 7CD-G023-08

Oven Profile: 70 °C to 120 °C @ 20 °C/min to 180 °C @ 5 °C/min to 300 °C @ 30 °C/min

Carrier Gas: Constant Flow Helium, 0.5 mL/min

Injection: Split 10:1 1 μL @ 260°C

Detection: Mass Selective (MSD) (320°C)

Analyst Note: Analytes are 20ppm derivatized with HFBA

Sim ions:

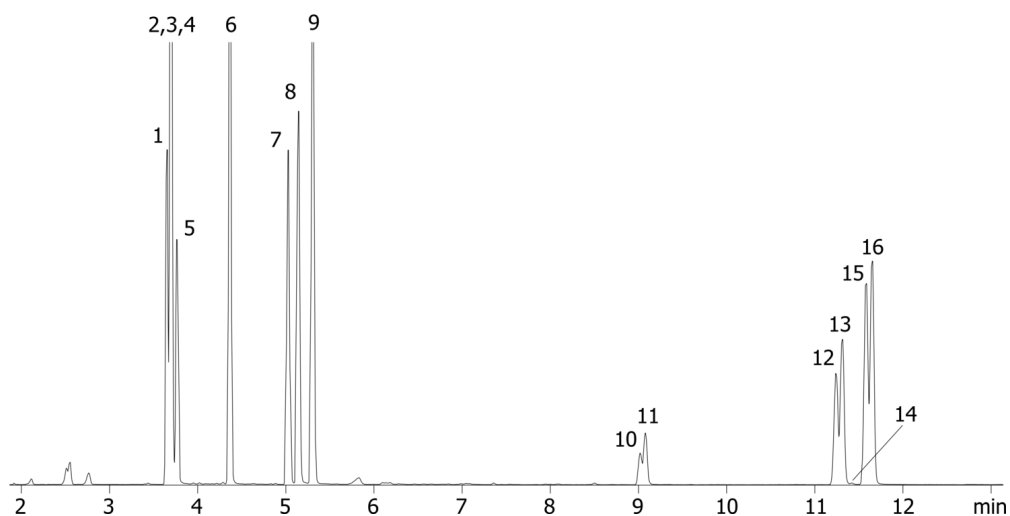
(Quant ion*) D11-Amphetamine (*244,128): Amphetamine (*240,118,117): D14-Methamphetamine (*261,213):
Methamphetamine (*254,210,118): D5-MDA (*167,380,244): MDA (*162,375,240): D5-MDMA (*258,213,164):
MDMA (*254,210,389): D5-MDEA (*273,241,408): MDEA (*268,240,403)



Products used in this application:



18039



Expanded amphetamines and interferences including TFMPP by MSD on a ZB-Drug1

ANALYTES:

- 1 Norephedrine
- 2 Norpseudoephedrine
- 3 Phentermine
- 4 Amphetamine-d11
- 5 Amphetamine
- 6 Ephedrine
- 7 Methamphetamine-d14
- 8 Methamphetamine
- 9 Pseudoephedrine
- 10 MDA-d5
- 11 MDA
- 12 MDMA-d5
- 13 MDMA
- 14 TFMPP
- 15 MDEA-d5
- 16 MDEA

