

US and EU Polynuclear Aromatic Hydrocarbons (PAH's) on ZB-XLB-HT

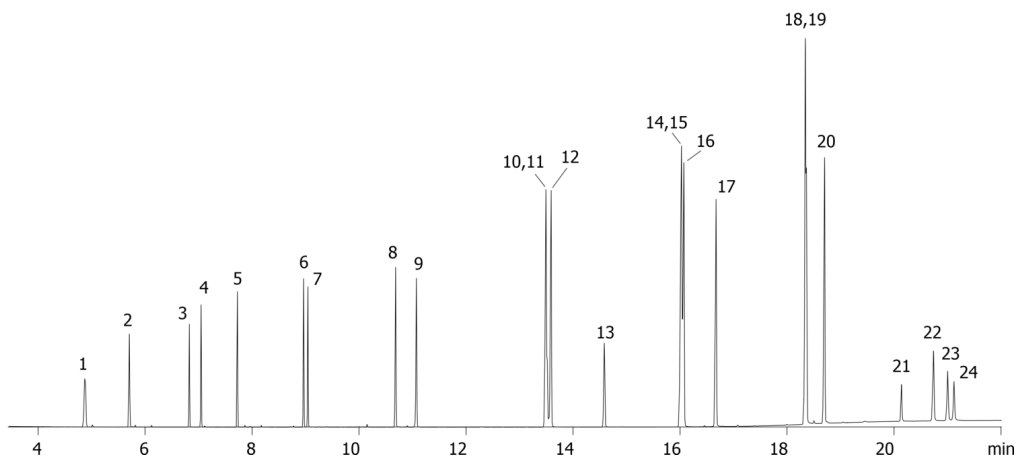
Column: Zebron[™] ZB-XLB-HT, GC Cap. Column 30 m x 0.25 mm x 0.25 µm, Ea
Phase: Proprietary XLB Phase
Dimensions: 30 meters x 0.25 mm x 0.25 µm
Order No: 7HG-G024-11
Oven Profile: 80 °C for 0.66 min to 250 °C @ 20 °C/min to 300 °C @ 8 °C/min to 360 °C @ 20 °C/min for 6 min
Carrier Gas: Constant Flow Helium, 1.2 mL/min
Injection: Splitless :1 1 µL @ 280°C
Detection: Mass Selective (MSD) (360°C)
Analyst Note: Pulsed Splitless injection @ 20psi for 0.66 min.
All analytes @ 10ppm in dichloromethane



Products used in this application:



18051



US and EU Polynuclear Aromatic Hydrocarbons (PAH's) on ZB-XLB-HT

ANALYTES:

- 1 Naphthalene
- 2 2-Methylnaphthalene
- 3 Acenaphthylene
- 4 Acenaphthene
- 5 Fluorene
- 6 Phenanthrene
- 7 Anthracene
- 8 Fluoranthene
- 9 Pyrene
- 10 Benz[a]anthracene
- 11 Cyclopenta[c,d]pyrene
- 12 Chrysene
- 13 5-Methylchrysene
- 14 Benzo[b]fluoranthene
- 15 Benzo[j]fluoranthene
- 16 Benzo[k]fluoranthene
- 17 Benzo[a]pyrene
- 18 Dibenz[a,h]anthracene
- 19 Indeno[1,2,3-cd]pyrene
- 20 Benzo[g,h,i]perylene
- 21 Dibenzo[a,l]pyrene
- 22 Dibenzo[a,e]pyrene
- 23 Dibenzo[a,i]pyrene
- 24 Dibenzo[a,h]pyrene

