

# HPLC Application

ID No.: 18151

## EPA Method 8330: Explosive Mix Using Synergi Hydro-RP

**Column:** Synergi<sup>™</sup> 4 µm Hydro-RP 80 Å, LC Column 250 x 4.6 mm, Ea

**Dimensions:** 250 x 4.6 mm ID

**Order No:** 00G-4375-E0

**Elution Type:** Gradient

**Eluent A:** Methanol

**Eluent B:** Water

| Gradient Profile: | Step No. | Time (min) | Pct A | Pct B |
|-------------------|----------|------------|-------|-------|
|                   | 1        | 0          | 55    | 45    |
|                   | 2        | 2          | 55    | 45    |
|                   | 3        | 22         | 75    | 25    |
|                   | 4        | 22.01      | 55    | 45    |
|                   | 5        | 25         | 55    | 45    |

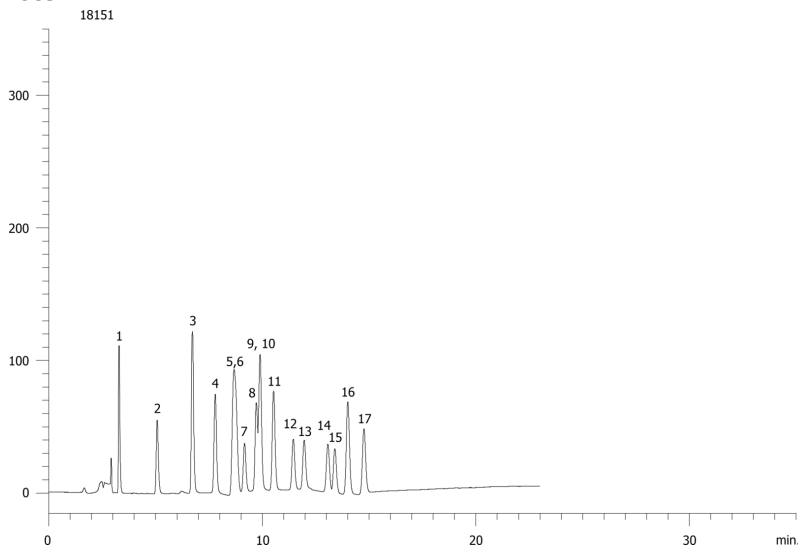


**Flow Rate:** 1 mL/min

**Col. Temp.:** 30 °C

**Detection:** UV-Vis Abs.-Variable Wave.(UV) @ 254 nm (ambient)

**Analyst Note:** 100ul of 100ug/ml 17 component mix was diluted with 900ul of 50:50 Methanol/water



## EPA Method 8330: Explosive Mix Using Synergi Hydro-RP

### ANALYTES:

- 1** Octahydro-1,3,5,7-tetranitro-1,3,5,7-tetrazocine (HMX)
- 2** Hexahydro-1,3,5-trinitro-1,3,5-triazine
- 3** 1,3,5-Trinitrobenzene
- 4** Methyl-2,4,6-trinitrophenylnitramine (Tetryl)
- 5** 1,3-Dinitrobenzene
- 6** Nitrobenzene
- 7** Nitroglycerin
- 8** 2,4,6-Trinitrotoluene
- 9** 3,5-Dinitroaniline
- 10** 4-Amino-2,6 dinitrotoluene
- 11** 2 Amino-4,6 dinitrotoluene
- 12** 2,6-Dinitrotoluene
- 13** 2,4-Dinitrotoluene
- 14** Pentaerythritol tetranitrate
- 15** 2-Nitrotoluene
- 16** 4-Nitrotoluene
- 17** 3-Nitrotoluene

