

HPLC Application

ID No.: 18166

Column Test Mix on Kinetex 2.6 µm C18 50 x 2.1 mm

Column: Kinetex® 2.6 µm C18 100 Å, LC Column 50 x 2.1 mm, Ea

Dimensions: 50 x 2.1 mm ID

Order No: 00B-4462-AN

Elution Type: Isocratic

Eluent A: Water

Eluent B: Acetonitrile

Gradient Profile:	Step No.	Time (min)	Pct A	Pct B
	1	0	50	50

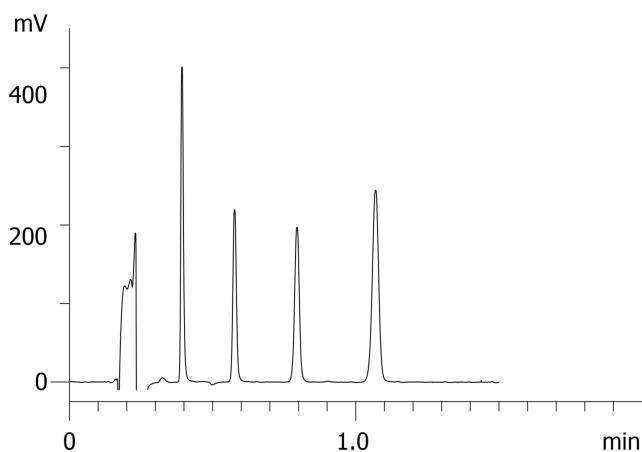
Flow Rate: 0.6 mL/min

Col. Temp.: ambient

Detection: UV-Vis Abs.-Variable Wave.(UV) @ 254 nm (ambient)
18166



Products used in this application:



ANALYTES:

- 1** Acetophenone
Retention Time: 0.396 min
- 2** Benzene
Retention Time: 0.585 min
- 3** Toluene
Retention Time: 0.808 min
- 4** Naphthalene
Retention Time: 1.089 min

