

## Column Test Mix on Kinetex 2.6µm C18 50 x 4.6mm ID

**Column:** Kinetex® 2.6 µm C18 100 Å, LC Column 50 x 4.6 mm, Ea

**Dimensions:** 50 x 4.6 mm ID

**Order No:** 00B-4462-E0

**Elution Type:** Isocratic

**Eluent A:** water

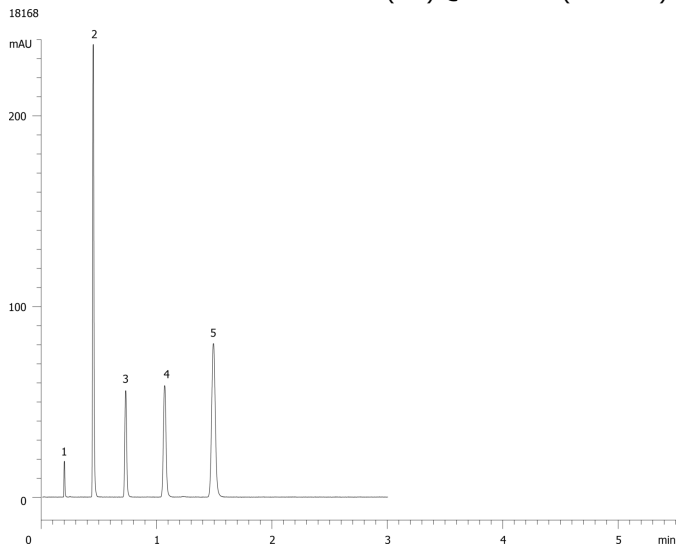
**Eluent B:** acetonitrile

Gradient Profile:	Step No.	Time (min)	Pct A	Pct B
	1	0	50	50

**Flow Rate:** 2.16 mL/min

**Col. Temp.:** ambient

**Detection:** UV-Vis Abs.-Variable Wave.(UV) @ 254 nm (ambient)



Products used in this application:



### ANALYTES:

- 1** Uracil  
Retention Time: 0.202 min
- 2** Acetophenone  
Retention Time: 0.452 min
- 3** Benzene  
Retention Time: 0.733 min
- 4** Toluene  
Retention Time: 1.07 min
- 5** Naphthalene  
Retention Time: 1.493 min

