

# GC Application

ID No.: 18175

## Drug screen by MSD on a ZB-Drug1

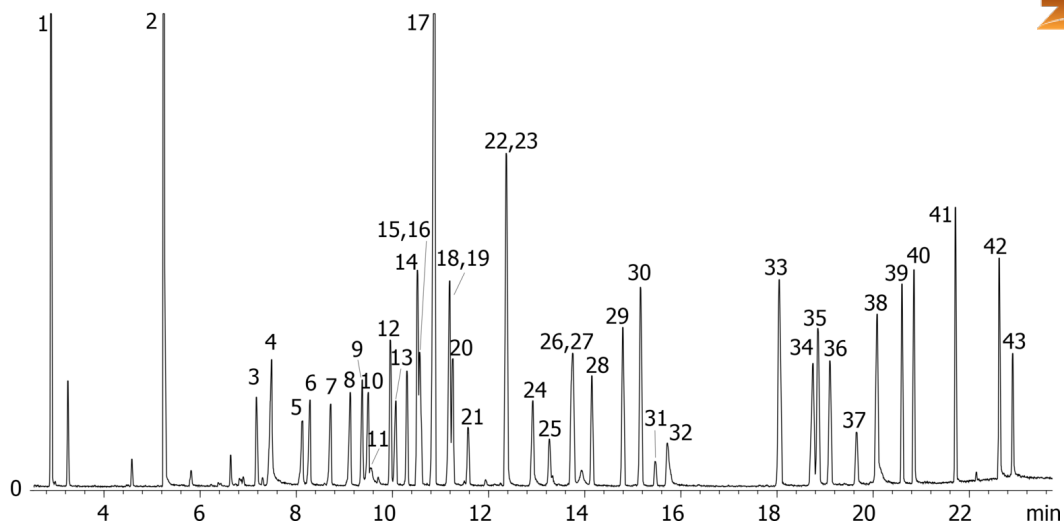
**Column:** Zebtron™ ZB-Drug-1, GC Cap. Column 10 m x 0.18 mm x 0.18 μm, Ea  
**Phase:** Proprietary Drug Phase  
**Dimensions:** 10 meters x 0.18 mm x 0.18 μm  
**Order No:** 7CD-G023-08  
**Oven Profile:** 50°C to 150°C @ 15°C/min to 240°C @ 7 °C/min to 320°C @ 25°C/min for 2 min  
**Carrier Gas:** Constant Flow Helium, 1 mL/min  
**Injection:** Split 10:1 1 μL @ 260°C  
**Detection:** Mass Selective (MSD) (320°C)  
**Analyst Note:** Analytes are 25ppm in Methanol



Products used in this application:



18175



## Drug screen by MSD on a ZB-Drug1

### ANALYTES:

- |                            |                     |
|----------------------------|---------------------|
| <b>1</b> Acetophenone      | <b>41</b> Ibogaine  |
| <b>2</b> Nicotine          | <b>42</b> Triazolam |
| <b>3</b> Benzocaine        | <b>43</b> LSD       |
| <b>4</b> Ibuprofen         |                     |
| <b>5</b> Allobarbitol      |                     |
| <b>6</b> Aprobarbitol      |                     |
| <b>7</b> Butalbital        |                     |
| <b>8</b> Amobarbitol       |                     |
| <b>9</b> Phenacetin        |                     |
| <b>10</b> Pentobarbitol    |                     |
| <b>11</b> Acetaminophen    |                     |
| <b>12</b> Benzphetamine    |                     |
| <b>13</b> Secobarbitol     |                     |
| <b>14</b> Phencyclidine    |                     |
| <b>15</b> Meprobamate      |                     |
| <b>16</b> Diphenhydramine  |                     |
| <b>17</b> Lidocaine        |                     |
| <b>18</b> Hexobarbitol     |                     |
| <b>19</b> Doxylamine       |                     |
| <b>20</b> Glutethimide     |                     |
| <b>21</b> Caffeine         |                     |
| <b>22</b> Chlorpheniramine |                     |
| <b>23</b> Methapyrilene    |                     |
| <b>24</b> Phenobarbitol    |                     |
| <b>25</b> Procaine         |                     |
| <b>26</b> Methadone        |                     |
| <b>27</b> Brompheniramine  |                     |
| <b>28</b> Propoxyphene     |                     |
| <b>29</b> Trimipramine     |                     |
| <b>30</b> Chlorcyclizine   |                     |
| <b>31</b> Cocaine          |                     |
| <b>32</b> Desipramine      |                     |
| <b>33</b> Codeine          |                     |
| <b>34</b> Morphine         |                     |
| <b>35</b> Diazepam         |                     |
| <b>36</b> Hydrocodone      |                     |
| <b>37</b> 6-MAM            |                     |
| <b>38</b> Oxymorphone      |                     |
| <b>39</b> Heroin           |                     |
| <b>40</b> Fentanyl         |                     |

