

Melamine Extract from Milk by MSD on ZB-5ms

Column: Zebron™ ZB-5MS, GC Cap. Column 30 m x 0.25 mm x 0.25 µm, Ea

Phase: 5% Phenyl-Arylene 95% Dimethylpolysiloxane

Dimensions: 30 meters x 0.25 mm x 0.25 µm

Order No: 7HG-G010-11

Oven Profile: 100 °C for 0.5 min to 320 °C @ 15 °C/min for 5 min

Carrier Gas: Constant Flow Helium, 0.9 mL/min

Injection: Splitless :1 1 µL @ 280°C

Detection: Mass Selective (MSD) (320°C)

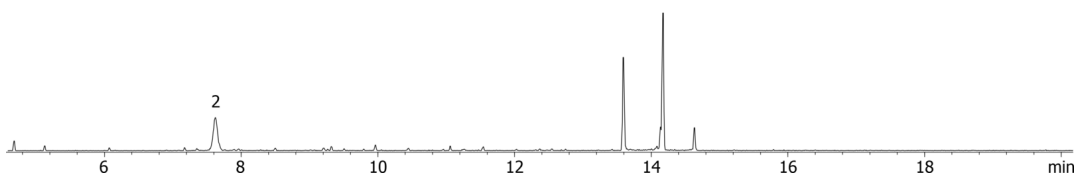
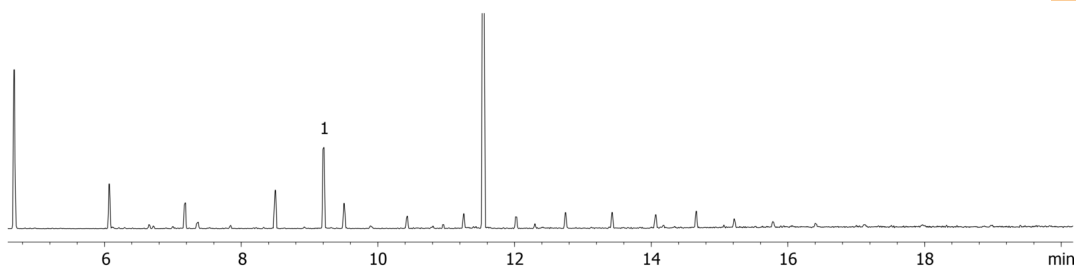
Analyst Note: Analytes were extracted from powdered milk and derivatized by BSTFA. Chromatograms are extracted ions of quantitation ions of Melamine (342) and Cyanuric Acid (345).



Products used in this application:



18197



ANALYTES:

- 1 Melamine
- 2 Cyanuric acid

