

Trans Stilbene Oxide on Lux 3u Cellulose-1 by SFC

Column: Lux® 3 µm Cellulose-1, LC Column 50 x 4.6 mm, Ea

Dimensions: 50 x 4.6 mm ID

Order No: 00B-4458-E0

Elution Type: Isocratic

Eluent A: 0.1% DEA+0.1% TFA in methanol

Eluent B: CO₂

Gradient Profile:	Step No.	Time (min)	Pct A	Pct B
	1	0	25	75

Flow Rate: 4 mL/min

Col. Temp.: 40 °C

Detection: UV-Vis Abs.-Variable Wave.(UV) @ 220 nm (ambient)

Analyst Note: SecurityGuard™ Guard Cartridge System extends column lifetime.

- SecurityGuard Cartridges, Lux Cellulose-1, 4 x 3.0mm ID, 10/Pk Part No.: AJ0-8403

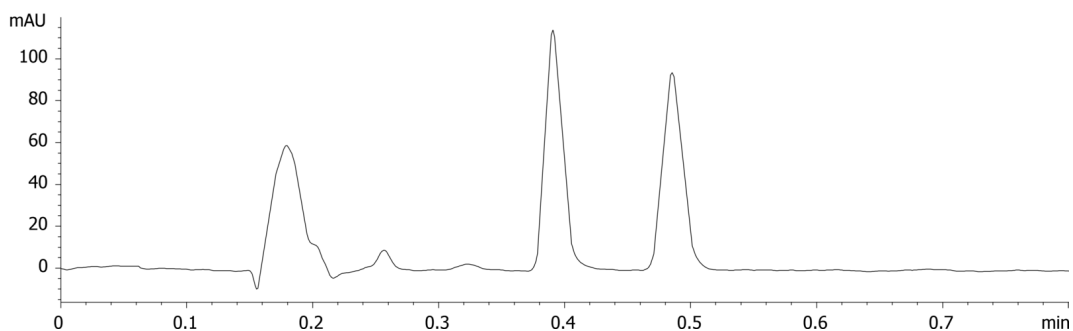
- Holder Part No.: KJ0-4282



Products used in this application:



18205



ANALYTES:

1 trans-Stilbene oxide

