

# HPLC Application

ID No.: 18212

## Trans Stilbene Oxide on a Lux 5u Cellulose 2 Axia 50mm ID column

**Column:** Lux<sup>®</sup> 5 µm Cellulose-2, LC Column 250 x 50 mm, AXIA<sup>™</sup> Packed, Ea

**Dimensions:** 250 x 50 mm ID

**Order No:** 00G-4457-V0-AX

**Elution Type:** Isocratic

**Eluent A:** Hexane

**Eluent B:** IPA

Gradient Profile:	Step No.	Time (min)	Pct A	Pct B
	1	0	90	10

**Flow Rate:** 50 mL/min

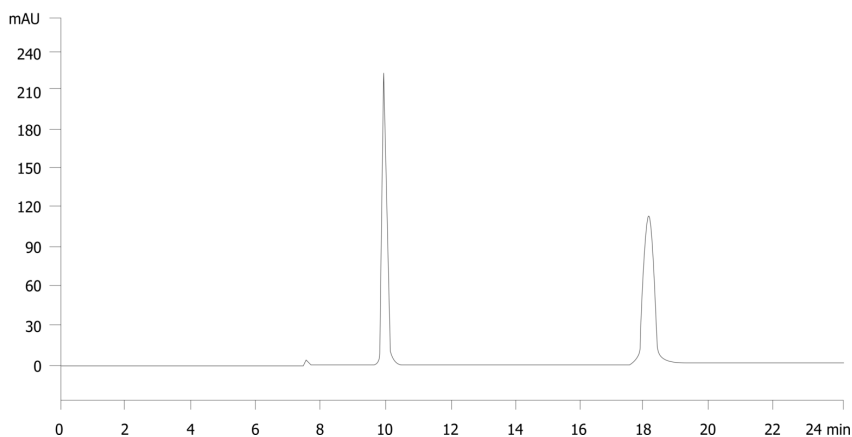
**Col. Temp.:** ambient

**Detection:** UV-Vis Abs.-Variable Wave.(UV) @ 220 nm (ambient)

18212



Products used in this application:



### ANALYTES:

1 trans-Stilbene oxide

