

HPLC Application

ID No.: 18218

Nisoldipine on Lux 3 µm Cellulose-1 250 x 4.6mm in NP

Column: Lux[®] 3 µm Cellulose-1, LC Column 250 x 4.6 mm, Ea

Dimensions: 250 x 4.6 mm ID

Order No: 00G-4458-E0

Elution Type: Isocratic

Eluent A: 0.1 % DEA in Hexane

Eluent B: 0.1% DEA in IPA

Gradient Profile:	Step No.	Time (min)	Pct A	Pct B
	1	20	90	10

Flow Rate: 1 mL/min

Col. Temp.: 40 °C

Detection: UV-Vis Abs.-Variable Wave.(UV) @ 220 nm (ambient)

Detector Info: Rs=1.78

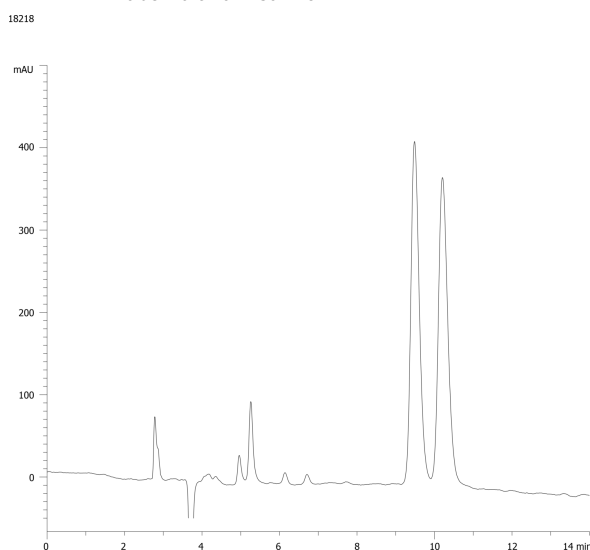
Analyst Note: SecurityGuard[™] Guard Cartridge System extends column lifetime.

- SecurityGuard Cartridges, Lux Cellulose-1, 4 x 3.0mm, 10/Pk Part No.: AJ0-8403

- Holder Part No.: KJ0-4282



Products used in this application:



ANALYTES:

1 Nisoldipine

Retention Time: 9.48 min

2 Nisoldipine

Retention Time: 10.21 min

