

# HPLC Application

ID No.: 18233

## Sulfa Drugs on Kinetex 1.7 $\mu$ m C18 50 x 2.1mm ID (0.6 mL/min)

**Column:** Kinetex<sup>®</sup> 1.7  $\mu$ m C18 100 Å, LC Column 50 x 2.1 mm, Ea

**Dimensions:** 50 x 2.1 mm ID

**Order No:** 00B-4475-AN

**Elution Type:** Gradient

**Eluent A:** water with 0.1% formic acid

**Eluent B:** acetonitrile with 0.1% formic acid

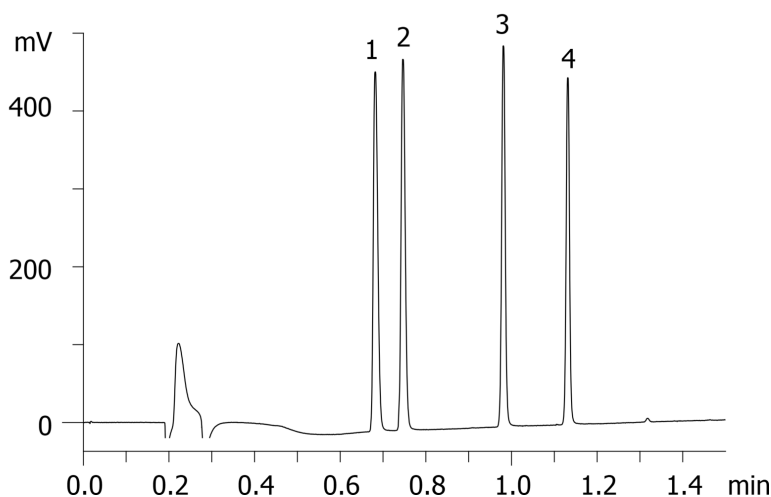
<b>Gradient Profile:</b>	<b>Step No.</b>	<b>Time (min)</b>	<b>Pct A</b>	<b>Pct B</b>
	<b>1</b>	0	95	5
	<b>2</b>	2.33	5	95
	<b>3</b>	2.36	95	5
	<b>4</b>	3.37	95	5

**Flow Rate:** 0.6 mL/min

**Col. Temp.:** ambient

**Detection:** UV-Vis Abs.-Variable Wave.(UV) @ 260 nm (25 °C)

18233



### ANALYTES:

- 1 Sulfathiazole
- 2 Sulfamerazine
- 3 Sulfamethoxazole
- 4 Sulfaquinoxaline



Products used in this application:

