

HPLC Application

ID No.: 18235

Agilent 1200 - Kinetex 2.6µm C18 50 x 4.6mm ID (1.8 mL/min)

Column: Kinetex® 2.6 µm C18 100 Å, LC Column 50 x 4.6 mm, Ea

Dimensions: 50 x 4.6 mm ID

Order No: 00B-4462-E0

Elution Type: Isocratic

Eluent A: water

Eluent B: acetonitrile

Gradient Profile:	Step No.	Time (min)	Pct A	Pct B
	1	0	50	50

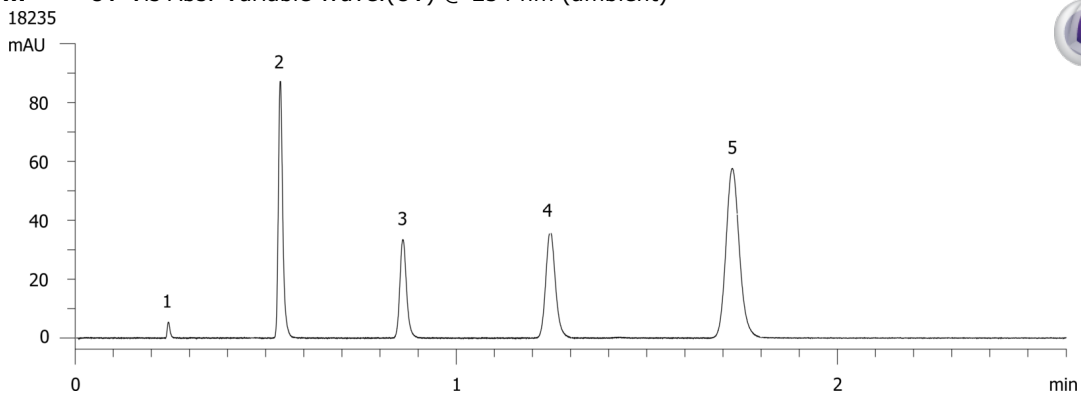
Flow Rate: 1.8 mL/min

Col. Temp.: ambient

Detection: UV-Vis Abs.-Variable Wave.(UV) @ 254 nm (ambient)



Products used in this application:



ANALYTES:

- 1** Uracil
Retention Time: 0.242 min
- 2** Acetophenone
Retention Time: 0.536 min
- 3** Benzene
Retention Time: 0.86 min
- 4** Toluene
Retention Time: 1.247 min
- 5** Naphthalene
Retention Time: 1.725 min