

Agilent 1200 - Kinetex 2.6µm C18 50 x 4.6mm ID (2.5 mL/min)

Column: Kinetex® 2.6 µm C18 100 Å, LC Column 50 x 4.6 mm, Ea

Dimensions: 50 x 4.6 mm ID

Order No: 00B-4462-E0

Elution Type: Isocratic

Eluent A: water

Eluent B: acetonitrile

| Gradient Profile: | Step No. | Time (min) | Pct A | Pct B |
|-------------------|----------|------------|-------|-------|
| | 1 | 0 | 50 | 50 |

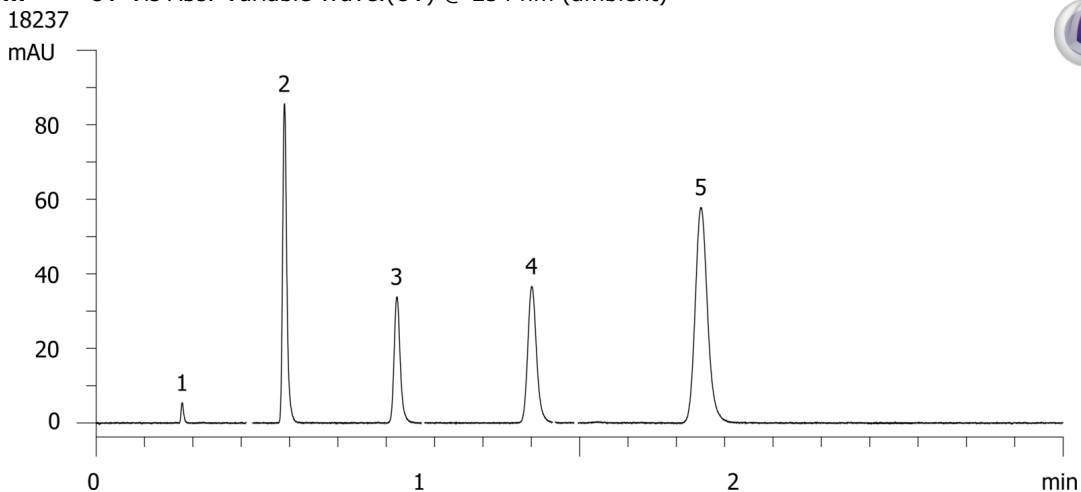
Flow Rate: 2.5 mL/min

Col. Temp.: ambient

Detection: UV-Vis Abs.-Variable Wave.(UV) @ 254 nm (ambient)



Products used in this application:



ANALYTES:

- 1** Uracil
Retention Time: 0.178 min
- 2** Acetophenone
Retention Time: 0.39 min
- 3** Benzene
Retention Time: 0.622 min
- 4** Toluene
Retention Time: 0.901 min
- 5** Naphthalene
Retention Time: 1.251 min

