

HPLC Application

ID No.: 18243

Tricyclic Antidepressants on Luna 5µm C18(2) 250 x 4.6mm ID on Agilent 1200 1 mL/min

Column: Luna® 5 µm C18(2) 100 Å, LC Column 250 x 4.6 mm, Ea

Dimensions: 250 x 4.6 mm ID

Order No: 00G-4252-E0

Elution Type: Isocratic

Eluent A: 20 mM Potassium Phosphate pH 7

Eluent B: 50:50 MeOH and ACN

Gradient Profile:	Step No.	Time (min)	Pct A	Pct B
	1	0	48	52

Flow Rate: 1 mL/min

Col. Temp.: 40 °C

Detection: UV-Vis Abs.-Variable Wave.(UV) @ 254 nm (ambient)

Analyst Note: SecurityGuard™ Guard Cartridge System extends column lifetime.

- SecurityGuard Cartridges, C18 4 x 3.0mm, 10/Pk Part No.: AJ0-4287

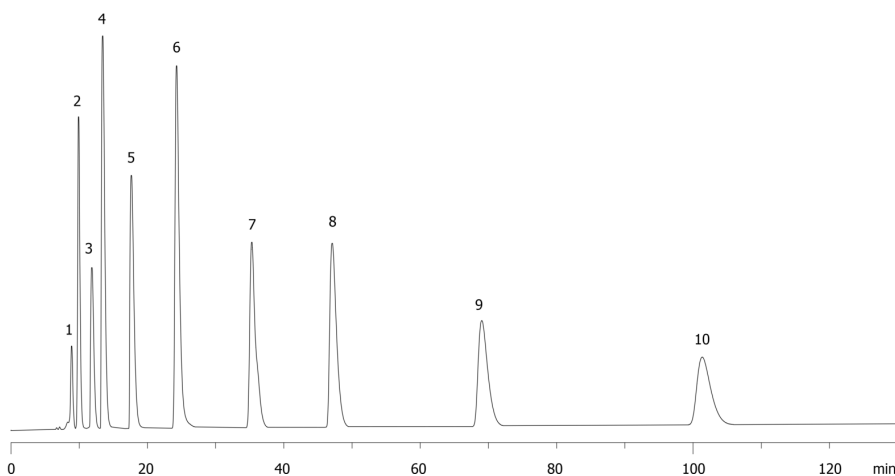
- Holder Part No.: KJ0-4282



Products used in this application:



18243



Tricyclic Antidepressants on Luna 5 μ m C18(2) 250 x 4.6mm ID on Agilent 1200 1 mL/min

ANALYTES:

- 1 Tianeptine
- 2 Desmethyldoxepin
- 3 Protriptyline
- 4 Desipramine
- 5 Imipramine
- 6 Amoxapine
- 7 Doxepin
- 8 Nortriptyline
- 9 Amitriptyline
- 10 Clomipramine

