

HPLC Application

ID No.: 18244

Tricyclic Antidepressants on Kinetex 2.6 μ m C18 100 x 4.6mm ID on Agilent 1200 (2.9 mL/min)

Column: Kinetex[®] 2.6 μ m C18 100 Å, LC Column 100 x 4.6 mm, Ea

Dimensions: 100 x 4.6 mm ID

Order No: 00D-4462-E0

Elution Type: Isocratic

Eluent A: 20 mM Potassium Phosphate pH 7

Eluent B: 50:50 MeOH and ACN

Gradient Profile:	Step No.	Time (min)	Pct A	Pct B
	1	0	48	52

Flow Rate: 2.9 mL/min

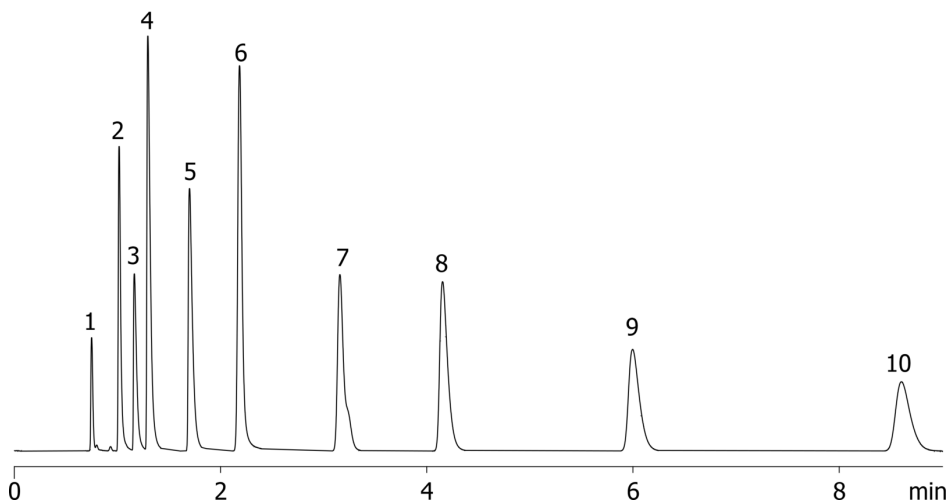
Col. Temp.: ambient

Detection: UV-Vis Abs.-Variable Wave.(UV) @ 254 nm (ambient)

18244



Products used in this application:



Tricyclic Antidepressants on Kinetex 2.6 μ m C18 100 x 4.6mm ID on Agilent 1200 (2.9 mL/min)

ANALYTES:

- 1 Tianeptine
- 2 Desmethyldoxepin
- 3 Protriptyline
- 4 Desipramine
- 5 Imipramine
- 6 Amoxapine
- 7 Doxepin
- 8 Nortriptyline
- 9 Amitriptyline
- 10 Clomipramine

