

HPLC Application

ID No.: 18245

Tricyclic Antidepressants on Kinetex 2.6 μ m C18 50 x 2.1mm ID on Agilent 1200 (0.6 mL/min)

Column: Kinetex[®] 2.6 μ m C18 100 Å, LC Column 50 x 2.1 mm, Ea

Dimensions: 50 x 2.1 mm ID

Order No: 00B-4462-AN

Elution Type: Isocratic

Eluent A: 20 mM Potassium Phosphate pH 7

Eluent B: 50:50 MeOH and ACN

| Gradient Profile: | Step No. | Time (min) | Pct A | Pct B |
|--------------------------|-----------------|-------------------|--------------|--------------|
| | 1 | 0 | 48 | 52 |

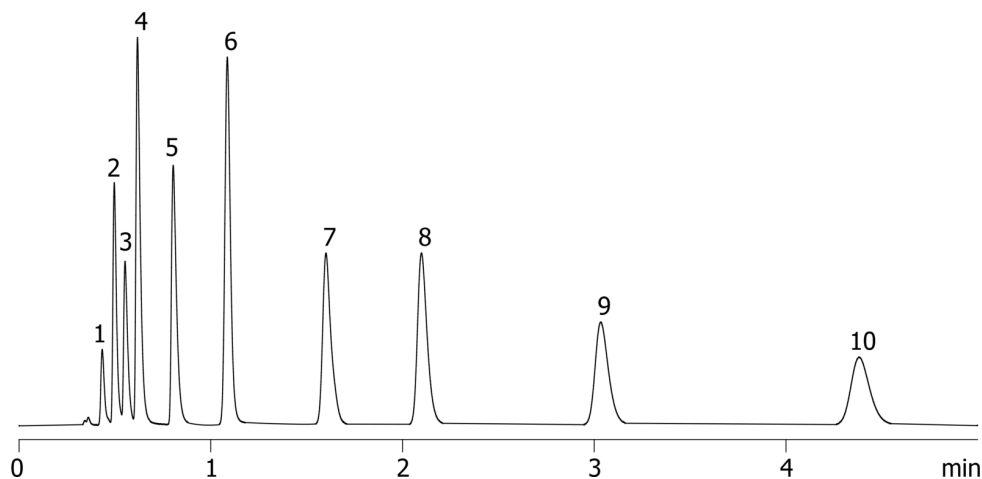
Flow Rate: 0.6 mL/min

Col. Temp.: ambient

Detection: UV-Vis Abs.-Variable Wave.(UV) @ 254 nm (ambient)
18245



Products used in this application:



Tricyclic Antidepressants on Kinetex 2.6 μ m C18 50 x 2.1mm ID on Agilent 1200 (0.6 mL/min)

ANALYTES:

- 1 Tianeptine
- 2 Desmethyldoxepin
- 3 Protriptyline
- 4 Desipramine
- 5 Imipramine
- 6 Amoxapine
- 7 Doxepin
- 8 Nortriptyline
- 9 Amitriptyline
- 10 Clomipramine

