

HPLC Application

ID No.: 18247

TCA 10 on Luna 5 μ m C18(2) 150 x 4.6 on Agilent 1100 1.0 mL/min

Column: Luna[®] 5 μ m C18(2) 100 \AA , LC Column 150 x 4.6 mm, Ea

Dimensions: 150 x 4.6 mm ID

Order No: 00F-4252-E0

Elution Type: Isocratic

Eluent A: 20 mM Potassium Phosphate pH 7.0

Eluent B: 50:50 MeOH and ACN

| Gradient Profile: | Step No. | Time (min) | Pct A | Pct B |
|-------------------|----------|------------|-------|-------|
| | 1 | 0 | 48 | 52 |

Flow Rate: 1 mL/min

Col. Temp.: 40 $^{\circ}$ C

Detection: UV-Vis Abs.-Variable Wave.(UV) @ 254 nm (ambient)

Detector Info: with 0.17mm ID green capillaries and needle seat, Std flow cell, detector rate @1.0s

Analyst Note: SecurityGuard[™] Guard Cartridge System extends column lifetime.

- SecurityGuard Cartridges, C18 4 x 3.0mm, 10/Pk Part No.: A30-4287

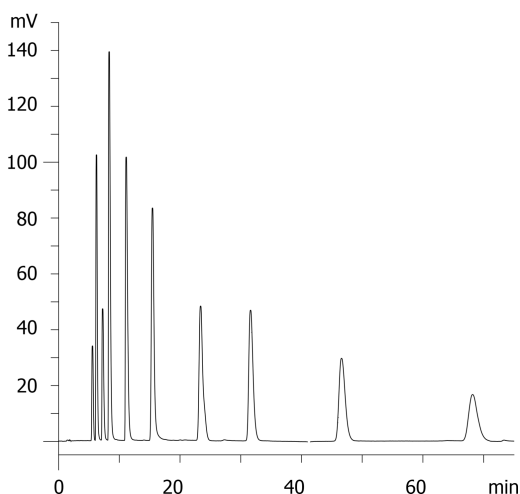
- Holder Part No.: K30-4282



Products used in this application:



18247



TCA 10 on Luna 5 um C18(2) 150 x 4.6 on Agilent 1100 1.0 mL/min

ANALYTES:

- 1 Tianeptine
- 2 Desmethyldoxepin
- 3 Protriptyline
- 4 Desipramine
- 5 Imipramine
- 6 Amoxapine
- 7 Doxepin
- 8 Nortriptyline
- 9 Amitriptyline
- 10 Clomipramine

