

# HPLC Application

ID No.: 18251

## Tricyclic Antidepressants on Kinetex 2.6 $\mu$ m C18 50 x 4.6 mm ID on Agilent 1100 (system optimization)

**Column:** Kinetex<sup>®</sup> 2.6  $\mu$ m C18 100  $\text{\AA}$ , LC Column 50 x 4.6 mm, Ea

**Dimensions:** 50 x 4.6 mm ID

**Order No:** 00B-4462-E0

**Elution Type:** Isocratic

**Eluent A:** 20 mM Potassium Phosphate pH 7.0

**Eluent B:** 50:50 MeOH and ACN

Gradient Profile:	Step No.	Time (min)	Pct A	Pct B
	1	0	48	52

**Flow Rate:** 2.9 mL/min

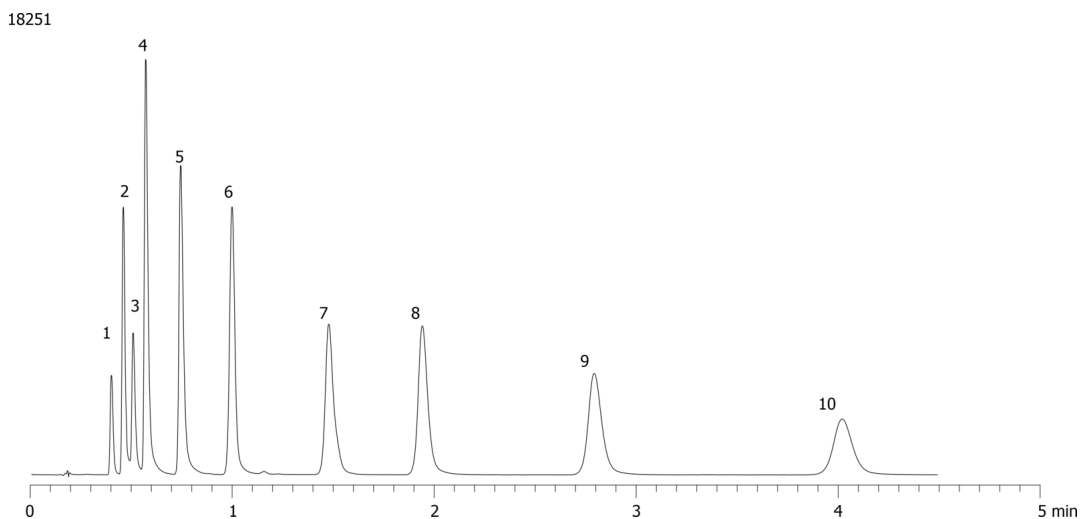
**Col. Temp.:** ambient

**Detection:** UV-Vis Abs.-Variable Wave.(UV) @ 254 nm (ambient)

**Detector Info:** with 0.17mm ID green capillaries and needle seat, standard flow cell, detector rate @ 0.1 s  
280 bar



Products used in this application:



## Tricyclic Antidepressants on Kinetex 2.6 $\mu$ m C18 50 x 4.6 mm ID on Agilent 1100 (system optimization)

### ANALYTES:

- 1 Tianeptine
- 2 Desmethyldoxepin
- 3 Protriptyline
- 4 Desipramine
- 5 Imipramine
- 6 Amoxapine
- 7 Doxepin
- 8 Nortriptyline
- 9 Amitriptyline
- 10 Clomipramine

