

System Comparison - Agilent 1100 with standard flow cell on Kinetex 2.6µm C18 50 x 4.6mm ID

Column: Kinetex® 2.6 µm C18 100 Å, LC Column 50 x 4.6 mm, Ea

Dimensions: 50 x 4.6 mm ID

Order No: 00B-4462-E0

Elution Type: Isocratic

Eluent A: Water

Eluent B: Acetonitrile

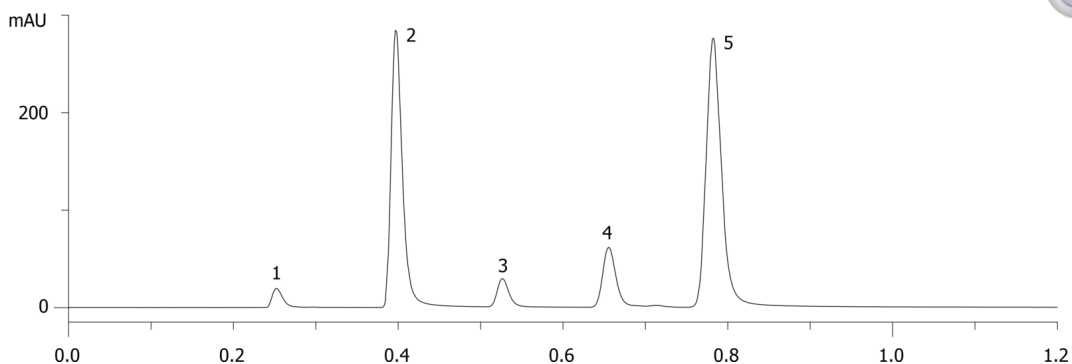
Gradient Profile:	Step No.	Time (min)	Pct A	Pct B
	1	0	35	65

Flow Rate: 1.85 mL/min

Col. Temp.: ambient

Detection: UV-Vis Abs.-Variable Wave.(UV) @ nm (ambient)

18252



Products used in this application:



ANALYTES:

1 Uracil

Retention Time: 0.253 min

2 Acetophenone

Retention Time: 0.398 min

3 Benzene

Retention Time: 0.527 min

4 Toluene

Retention Time: 0.656 min

5 Naphthalene

Retention Time: 0.713 min

