

System Comparison - Agilent 1100 w/micro flow cell on Kinetex 2.6µm C18 50 x 4.6mm ID

Column: Kinetex® 2.6 µm C18 100 Å, LC Column 50 x 4.6 mm, Ea

Dimensions: 50 x 4.6 mm ID

Order No: 00B-4462-E0

Elution Type: Isocratic

Eluent A: Water

Eluent B: Acetonitrile

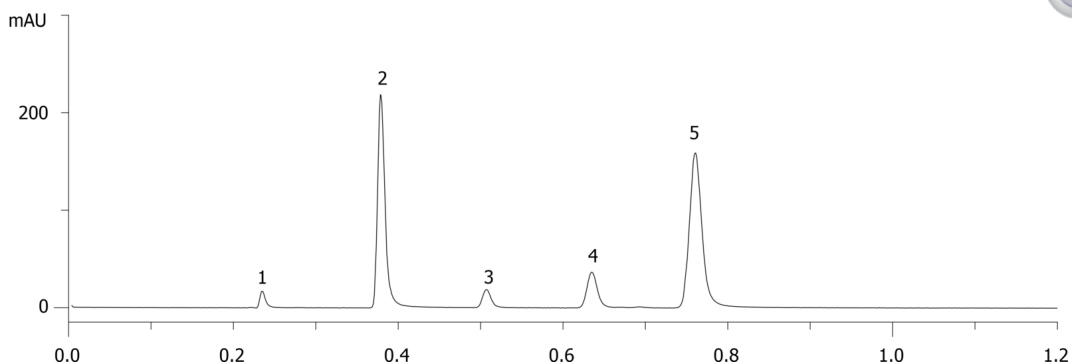
Gradient Profile:	Step No.	Time (min)	Pct A	Pct B
	1	0	35	65

Flow Rate: 1.85 mL/min

Col. Temp.: ambient

Detection: UV-Vis Abs.-Variable Wave.(UV) @ nm (ambient)

18253



Products used in this application:



ANALYTES:

- 1** Uracil
Retention Time: 0.236 min
- 2** Acetophenone
Retention Time: 0.379 min
- 3** Benzene
Retention Time: 0.507 min
- 4** Toluene
Retention Time: 0.635 min
- 5** Naphthalene
Retention Time: 0.761 min

