

System Comparison - Jasco XL-C on Kinetex 2.6µm C18 50 x 4.6mm ID

Column: Kinetex® 2.6 µm C18 100 Å, LC Column 50 x 4.6 mm, Ea

Dimensions: 50 x 4.6 mm ID

Order No: 00B-4462-E0

Elution Type: Isocratic

Eluent A: Water

Eluent B: Acetonitrile

| Gradient Profile: | Step No. | Time (min) | Pct A | Pct B |
|-------------------|----------|------------|-------|-------|
| | 1 | 0 | 35 | 65 |

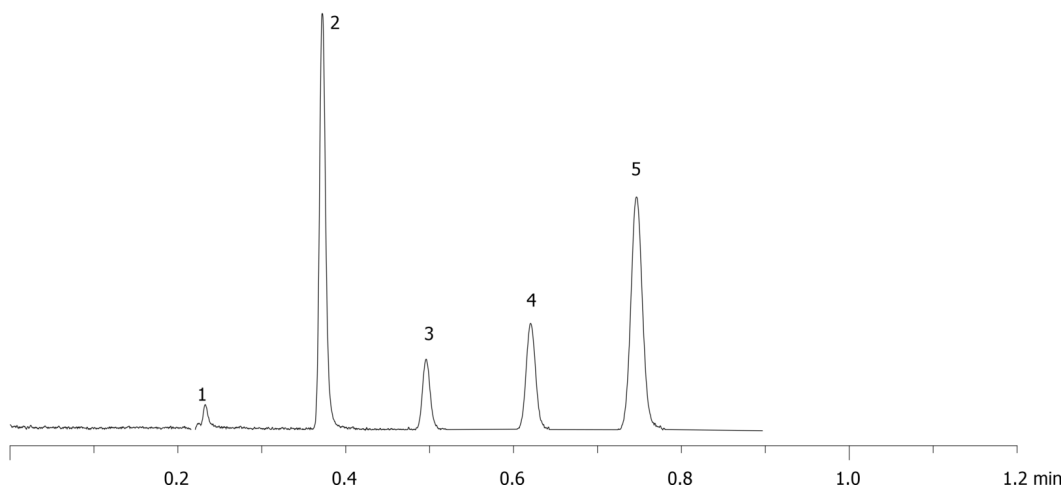
Flow Rate: 1.85 mL/min

Col. Temp.: ambient

Detection: UV-Vis Abs.-Variable Wave.(UV) @ nm (ambient)
18255



Products used in this application:



ANALYTES:

- 1** Uracil
Retention Time: 0.26 min
- 2** Acetophenone
Retention Time: 0.49 min
- 3** Benzene
Retention Time: 0.74 min
- 4** Toluene
Retention Time: 0.99 min
- 5** Naphthalene
Retention Time: 1.24 min

