

HPLC Application

ID No.: 18257

System Comparison - Agilent 1200 on Kinetex 2.6µm C18 50 x 4.6mm ID

Column: Kinetex® 2.6 µm C18 100 Å, LC Column 50 x 4.6 mm, Ea

Dimensions: 50 x 4.6 mm ID

Order No: 00B-4462-E0

Elution Type: Isocratic

Eluent A: Water

Eluent B: Acetonitrile

Gradient Profile:	Step No.	Time (min)	Pct A	Pct B
	1	0	35	65

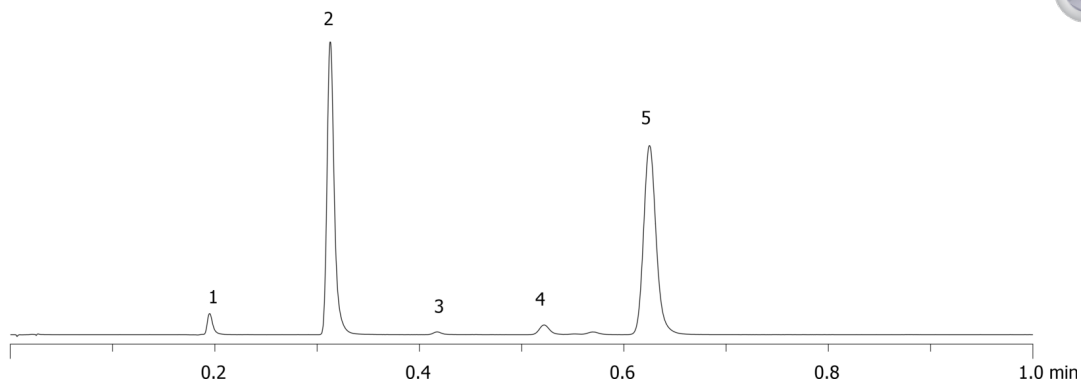
Flow Rate: 2.2 mL/min

Col. Temp.: ambient

Detection: UV-Vis Abs.-Variable Wave.(UV) @ nm (ambient)
18257



Products used in this application:



ANALYTES:

- 1 Uracil
- 2 Acetophenone
- 3 Benzene
- 4 Toluene
- 5 Naphthalene

