

# GC Application

ID No.: 18264

## Melamine and Cyanuric Acid on ZB-XLB-HT by MSD

**Column:** Zebron<sup>™</sup> ZB-XLB-HT, GC Cap. Column 15 m x 0.25 mm x 0.25 µm, Ea

**Phase:** Proprietary XLB Phase

**Dimensions:** 15 meters x 0.25 mm x 0.25 µm

**Order No:** 7EG-G024-11

**Oven Profile:** 100 °C for 0.5 min to 320 °C @ 25 °C/min

**Carrier Gas:** Constant Flow Helium, 1.4 mL/min

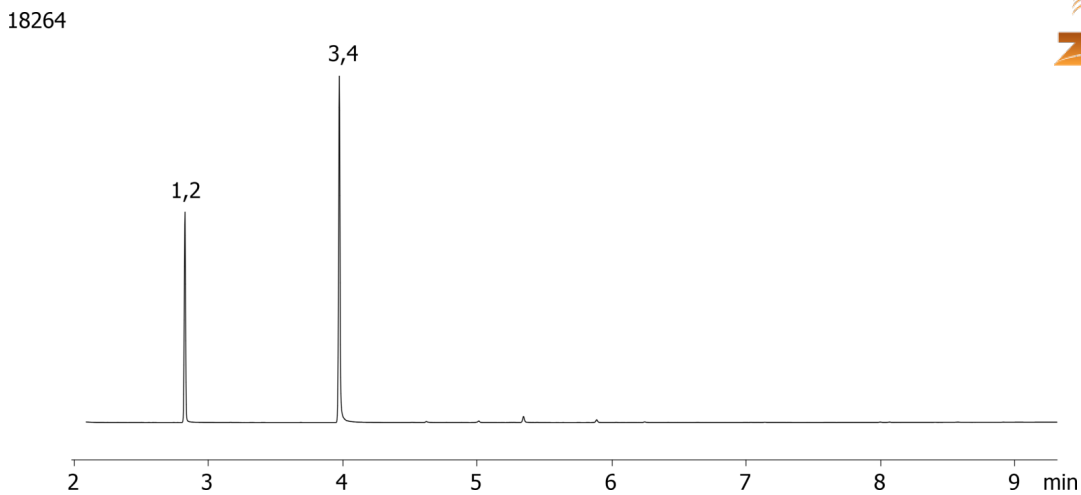
**Injection:** On-Column :1 0.1 µL @ 103°C

**Detection:** Mass Selective (MSD) (325°C)

**Analyst Note:** Analytes are 200ng/100uL in BSTFA/Pyridine (1:1)  
SIM Ions: Cyanuric Acid (IS) - 348\*, 333, 101; Cyanuric Acid - 345\*, 330, 100; Melamine (IS) - 173\*, 333, 348;



Products used in this application:



### ANALYTES:

- 1 Cyanuric acid 13C3
- 2 Cyanuric acid
- 3 Melamine 13C3 15N3
- 4 Melamine

