

Melamine and Cyanuric Acid Extracted from Baby Formula on ZB-XLB-HT by MSD

Column: Zebtron™ ZB-XLB-HT, GC Cap. Column 15 m x 0.25 mm x 0.25 µm, Ea

Phase: Proprietary XLB Phase

Dimensions: 15 meters x 0.25 mm x 0.25 µm

Order No: 7EG-G024-11

Oven Profile: 100 °C for 0.5 min to 320 °C @ 25 °C/min

Carrier Gas: Constant Flow Helium, 1.4 mL/min

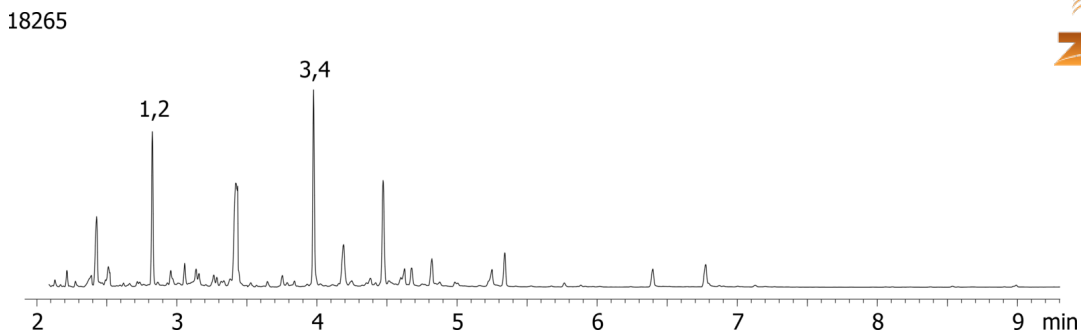
Injection: On-Column :1 0.1 µL @ 103°C

Detection: Mass Selective (MSD) (325°C)

Analyst Note: Analytes are 200ng/100uL in BSTFA/Pyridine (1:1)
SIM Ions: Cyanuric Acid (IS) - 348*, 333, 101; Cyanuric Acid - 345*, 330, 100; Melamine (IS) - 173*, 333, 348;



Products used in this application:



ANALYTES:

- 1 Cyanuric acid 13C3
- 2 Cyanuric acid
- 3 Melamine 13C3 15N3
- 4 Melamine