

HPLC Application

ID No.: 18276

Ketones on Kinetex 2.6µm C18 50 x 4.6mm ID (3.4 mL/min)

Column: Kinetex® 2.6 µm C18 100 Å, LC Column 50 x 4.6 mm, Ea

Dimensions: 50 x 4.6 mm ID

Order No: 00B-4462-E0

Elution Type: Gradient

Eluent A: water

Eluent B: acetonitrile

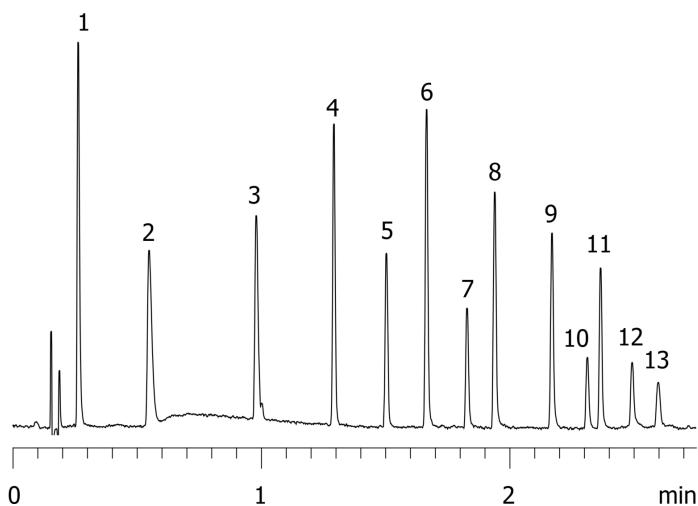
Gradient Profile:	Step No.	Time (min)	Pct A	Pct B
	1	0	95	5
	2	0.23	95	5
	3	2.19	5	95
	4	2.75	5	95
	5	2.76	95	5
	6	3.61	95	5

Flow Rate: 3.4 mL/min

Col. Temp.: ambient

Detection: UV-Vis Abs.-Diode Array (PDA) @ 258 nm (25 °C)

18276



Products used in this application:



Ketones on Kinetex 2.6 μ m C18 50 x 4.6mm ID (3.4 mL/min)

ANALYTES:

- 1 Acetone
- 2 2-Butanone
- 3 2-Pentanone
- 4 Acetophenone
- 5 2-Heptanone
- 6 Butyrophenone
- 7 2-Nonanone
- 8 Hexanophenone
- 9 Octanophenone
- 10 2-Tridecanone
- 11 Decanophenone
- 12 2-Pentadecanone
- 13 2-Hexadecanone

