

Simultaneous Extraction of Melamine and Cyanuric acid from Strata Melamine on Luna HILIC

Column: Luna® 3 µm HILIC 200 Å, LC Column 100 x 2 mm, Ea

Dimensions: 100 x 2 mm ID

Order No: 00D-4449-B0

Elution Type: Isocratic

Eluent A: 90/10 ACN/100 mM Ammonium Formate, pH 3.2

Gradient	Step No.	Time (min)	Pct A
Profile:	1	3.5	100

Flow Rate: 0.4 mL/min

Col. Temp.: ambient

Detection: Mass Spectrometer (MS) @ (ambient)

Detector Info: * MS in -ve ionization till 1.7 mins then to +ve till 3.5 mins

Analyst Note: SecurityGuard™ Guard Cartridge System extends column lifetime.

- SecurityGuard Cartridges, HILIC 4 x 2.0mm, 10/Pk Part No.: AJ0-8328

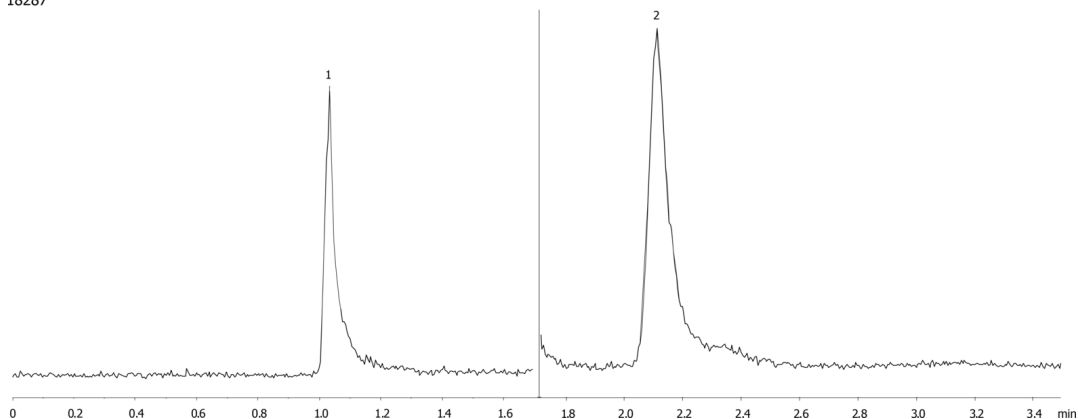
- Holder Part No.: KJ0-4282



Products used in this application:



18287



ANALYTES:

1 Cyanuric acid

Retention Time: 1.03 min

2 Melamine

Retention Time: 2.11 min

