

# HPLC Application

ID No.: 18289

## Simultaneous Analysis of Melamine and Cyanuric acid on Luna 3u 100x2.0 HILIC

**Column:** Luna® 3 µm HILIC 200 Å, LC Column 100 x 2 mm, Ea

**Dimensions:** 100 x 2 mm ID

**Order No:** 00D-4449-B0

**Elution Type:** Isocratic

**Eluent A:** 90/10- ACN/100 mM ammonium formate, pH 3.2

Gradient Profile:	Step No.	Time (min)	Pct A
	1	0	100

**Flow Rate:** 0.4 mL/min

**Col. Temp.:** ambient

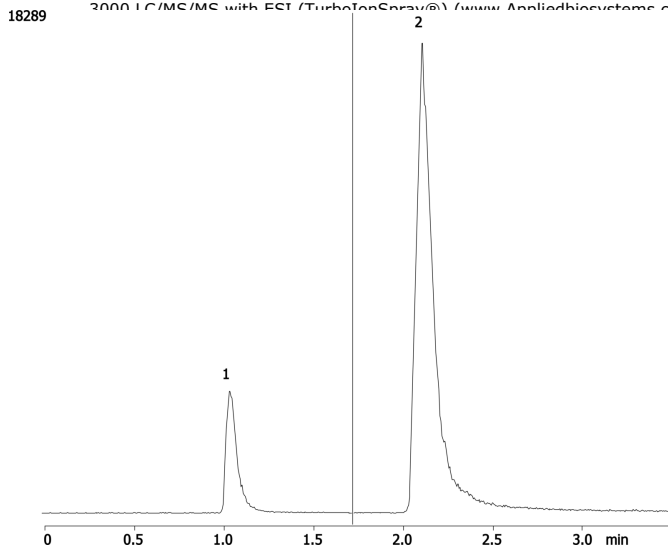
**Detection:** Mass Spectrometer (MS) @ (ambient)

**Analyst Note:** LC/MS/MS Condition:

Column: Luna 3µm HILIC, 100x2.0mm; Flow rate: 0.4ml/min; Mobile Phase: Isocratic; 90/10 ACN/100mM NH4 Formate pH 3.2; MS Detector: API 3000 LC/MS/MS with ESI (TurboIonSpray®) ([www.appliedbiosystems.com](http://www.appliedbiosystems.com)), Switch from -ve Ion Mode (for Cyanuric) to +ve ion at 1.7 mins (for



Products used in this application:



### ANALYTES:

- 1** Cyanuric acid  
Retention Time: 1.03 min
- 2** Melamine  
Retention Time: 2.11 min