

# HPLC Application

ID No.: 18291

## Metanephrine and Normetanephrine on Luna HILIC 3µm 50X2.0mm

**Column:** Luna® 3 µm HILIC 200 Å, LC Column 50 x 2 mm, Ea  
**Dimensions:** 50 x 2 mm ID  
**Order No:** 00B-4449-B0  
**Elution Type:** Gradient  
**Eluent A:** 95/5 ACN/100 mM ammonium formate, pH 3.2  
**Eluent B:** 50/45/5 ACN/Water/100 mM ammonium formate, pH 3.2

Gradient Profile:	Step No.	Time (min)	Pct A	Pct B
	1	0	100	0
	2	2.5	100	0
	3	2.51	0	100
	4	3	0	100
	5	3.01	100	0

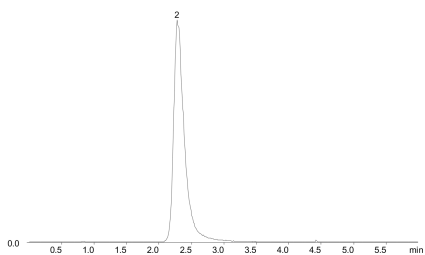
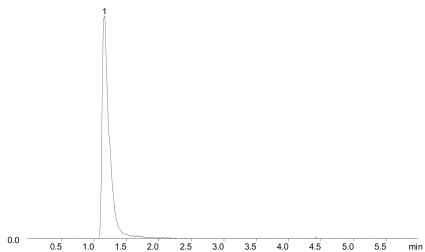
**Flow Rate:** 0.4 mL/min  
**Col. Temp.:** ambient  
**Detection:** Mass Spectrometer (MS) @ (ambient)  
**Analyst Note:** LC/MS/MS & Chromatographic Condition

MS Detector: API 3000 LC/MS/MS with ESI (TurboIonSpray®) (www.Appliedbiosystems.com), Positive Ion Mode; MRM; heater gas flow 7000 cc/min; heater temperature 550 °C; Column: LUNA 3µm HILIC, 50x2.0mm; Flow rate: 0.4ml/min  
ESI Source Conditions:

NEB: 9.00  
CUR: 10.00  
IS: 3500.00  
TEM: 550.00  
CAD: 11.00  
CE 23.00 Normetanephrine  
CE 25.00 Metanephrine

Analyte	Q1	Q3	Time	DP	FP	CE	CXP
NMN	166.4	134.2	150	61	370	23	8
MN	180.4	148.2	150	71	370	25	8

18291



Products used in this application:



## Metanephrine and Normetanephrine on Luna HILIC 3um 50X2.0mm

### ANALYTES:

- 1 Metanephrine
- 2 Normetanephrine

