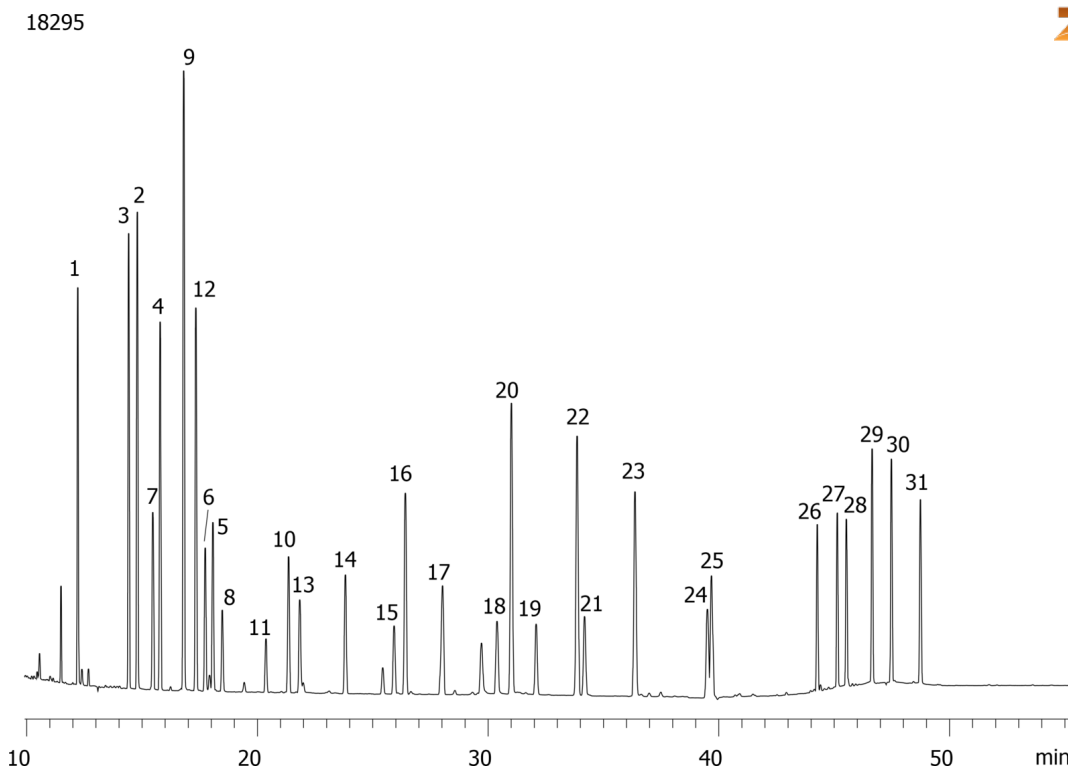


## Chlorinated Pollutants on ZB-5 by ECD

**Column:** Zebron<sup>™</sup> ZB-5, GC Cap. Column 60 m x 0.25 mm x 0.25 µm, Ea  
**Phase:** 5% Phenyl 95% Dimethylpolysiloxane  
**Dimensions:** 60 meters x 0.25 mm x 0.25 µm  
**Order No:** 7KG-G002-11  
**Oven Profile:** 50 °C for 1 min to 180 °C @ 20 °C/min for 1 to 240 °C @ 2 °C/min for 1 min to 300 °C @ 10 °C/min for 10 min  
**Carrier Gas:** Constant Flow Helium, 2.6 mL/min  
**Injection:** Pulsed :1 2 µL @ 280°C  
**Detection:** Electron Capture (ECD) (330°C)  
**Analyst Note:** Analytes are 12 ppb  
Pulsed Splitless Injection @ 4 bar for 1 minute, splitless for 2 min.  
Application Courtesy of Jurgen Banger of Landeslabor Schleswig Holstein.



Products used in this application:



## Chlorinated Pollutants on ZB-5 by ECD

### ANALYTES:

- 1 2-Brombiphenyl
- 2 Hexachlorobenzene
- 3 alpha-HCH (alpha-BHC)
- 4 gamma-HCH (gamma-BHC)
- 5 Moschus-Xylol
- 6 PCB 29
- 7 beta-HCH (beta-BHC)
- 8 PCB 28
- 9 delta-HCH (delta-BHC)
- 10 Aldrin
- 11 PCB 52
- 12 epsilon-HCH
- 13 4,4-Dichlorbenzophenone
- 14 cis-Heptachlorepoxyde
- 15 PCB 101
- 16 cis-Chlordane
- 17 Dieldrin
- 18 PCB 118
- 19 PCB 153
- 20 p,p'-DDD
- 21 PCB 138
- 22 p,p'-DDT
- 23 PCB 167
- 24 PCB 180
- 25 PBDE47
- 26 PBDE100
- 27 PBDE99
- 28 PBDE116
- 29 PBDE85
- 30 PBDE154
- 31 PBDE153

