

# GC Application

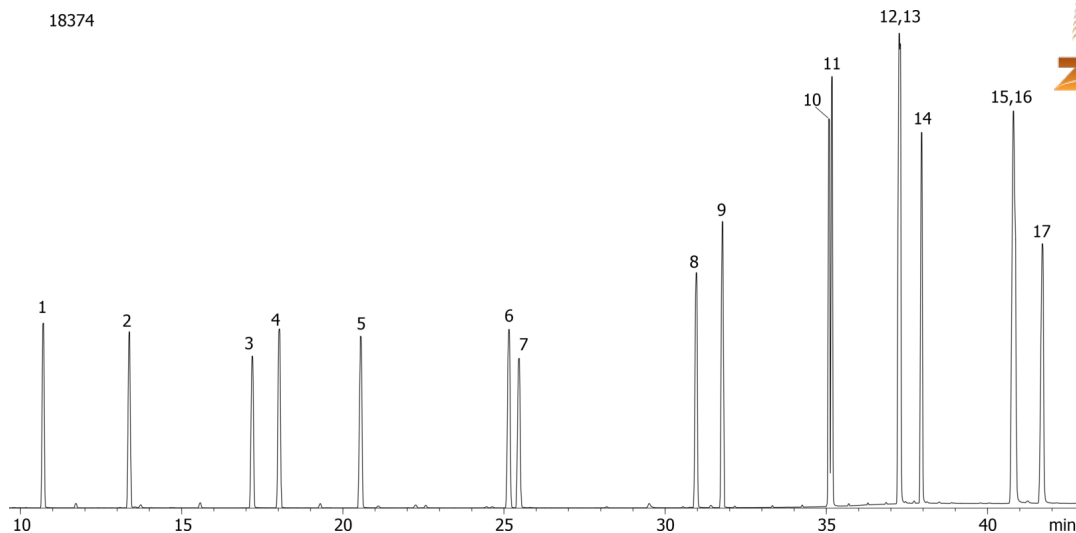
ID No.: 18374

## Polynuclear Aromatic Hydrocarbons (PAHs) on ZB-XLB

**Column:** Zebtron™ ZB-XLB, GC Cap. Column 30 m x 0.25 mm x 0.25 µm, Ea  
**Phase:** Proprietary XLB Phase  
**Dimensions:** 30 meters x 0.25 mm x 0.25 µm  
**Order No:** 7HG-G019-11  
**Oven Profile:** 40 °C for 1 min to 100 °C @ 15 °C/min to 225 °C @ 5 °C/min to 320 °C @ 15 °C/min for 5 min  
**Carrier Gas:** Constant Flow Helium, 0.8 mL/min  
**Injection:** On-Column :1 0.5 µL @ 43°C  
**Detection:** Mass Selective (MSD) (335°C)  
**Analyst Note:** Analytes 10 ppm in Acetone



Products used in this application:



## Polynuclear Aromatic Hydrocarbons (PAHs) on ZB-XLB

### ANALYTES:

- 1 Naphthalene
- 2 2-Methylnaphthalene
- 3 Acenaphthylene
- 4 Acenaphthene
- 5 Fluorene
- 6 Phenanthrene
- 7 Anthracene
- 8 Fluoranthene
- 9 Pyrene
- 10 Benz[a]anthracene
- 11 Chrysene
- 12 Benzo[b]fluoranthene
- 13 Benzo[k]fluoranthene
- 14 Benzo[a]pyrene
- 15 Dibenz[a,h]anthracene
- 16 Indeno[1,2,3-cd]pyrene
- 17 Benzo[g,h,i]perylene

