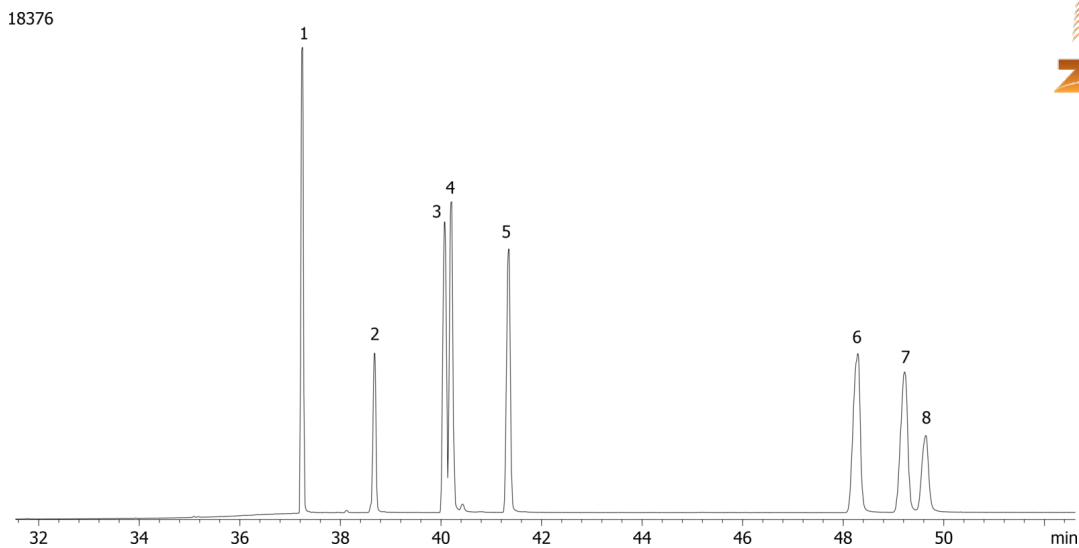


## European PAH Mix # 1 on ZB-XLB

**Column:** Zebtron™ ZB-XLB, GC Cap. Column 30 m x 0.25 mm x 0.25 µm, Ea  
**Phase:** Proprietary XLB Phase  
**Dimensions:** 30 meters x 0.25 mm x 0.25 µm  
**Order No:** 7HG-G019-11  
**Oven Profile:** 40 °C for 1 min to 100 °C @ 15 °C/min to 225 °C @ 5 °C/min to 320 °C @ 15 °C/min for 25 min  
**Carrier Gas:** Constant Flow Helium, 0.8 mL/min  
**Injection:** On-Column :1 0.5 µL @ 43°C  
**Detection:** Mass Selective (MSD) (335°C)  
**Analyst Note:** Analytes 10 ppm in Acetone



Products used in this application:



### ANALYTES:

- 1 Benzo[j]fluoranthene
- 2 3-Methylcholanthrene
- 3 Dibenz[a,h]acridine
- 4 Dibenz[a,,j]acridine
- 5 7H-Dibenzo[c,g]carbazole
- 6 Dibenzo[a,e]pyrene
- 7 Dibenzo[a,i]pyrene
- 8 Dibenzo[a,h]pyrene

