

GC Application

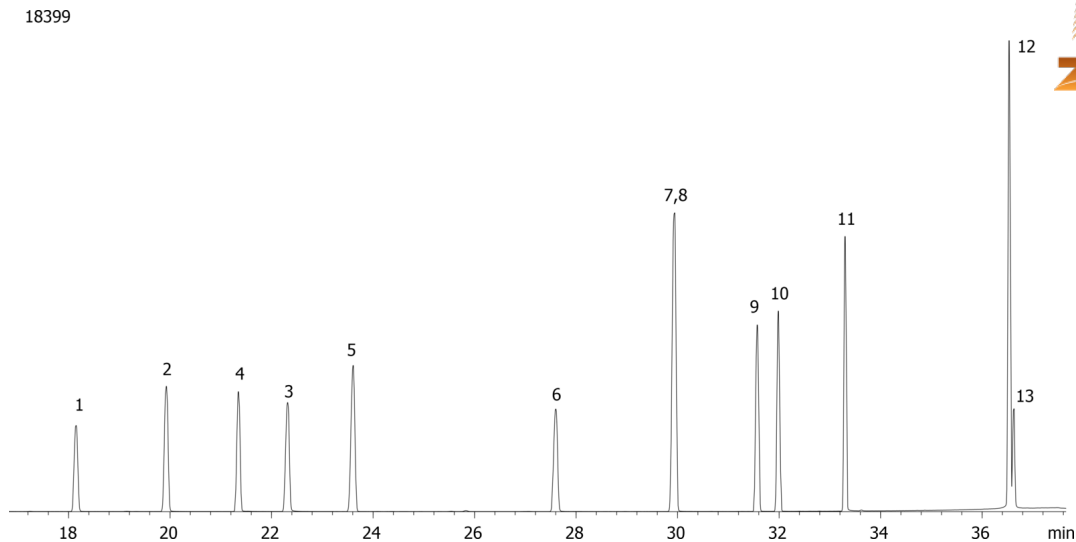
ID No.: 18399

Chlorinated Pesticides (EPA 508) Mix # 2 on ZB-35

Column: Zebtron™ ZB-35, GC Cap. Column 30 m x 0.25 mm x 0.25 μm, Ea
Phase: 35% Phenyl 65% Dimethylpolysiloxane
Dimensions: 30 meters x 0.25 mm x 0.25 μm
Order No: 7HG-G003-11
Oven Profile: 40 °C for 1 min to 100 °C @ 15 °C/min to 225 °C @ 5 °C/min to 320 °C @ 15 °C/min for 5 min
Carrier Gas: Constant Flow Helium, 0.8 mL/min
Injection: On-Column :1 0.5 μL @ 43°C
Detection: Mass Selective (MSD) (335°C)
Analyst Note: Analytes 10 ppm in Acetone



Products used in this application:



Chlorinated Pesticides (EPA 508) Mix # 2 on ZB-35

ANALYTES:

- 1 Etridiazole
- 2 Chloroneb
- 3 Propachlor
- 4 Trifluralin
- 5 Hexachlorobenzene
- 6 Chlorothalonil
- 7 Chlorpyrifos
- 8 Dacthal
- 9 gamma-Chlordane
- 10 alpha-Chlordane
- 11 Chlorobenzilate
- 12 Permethrin
- 13 Permethrin

