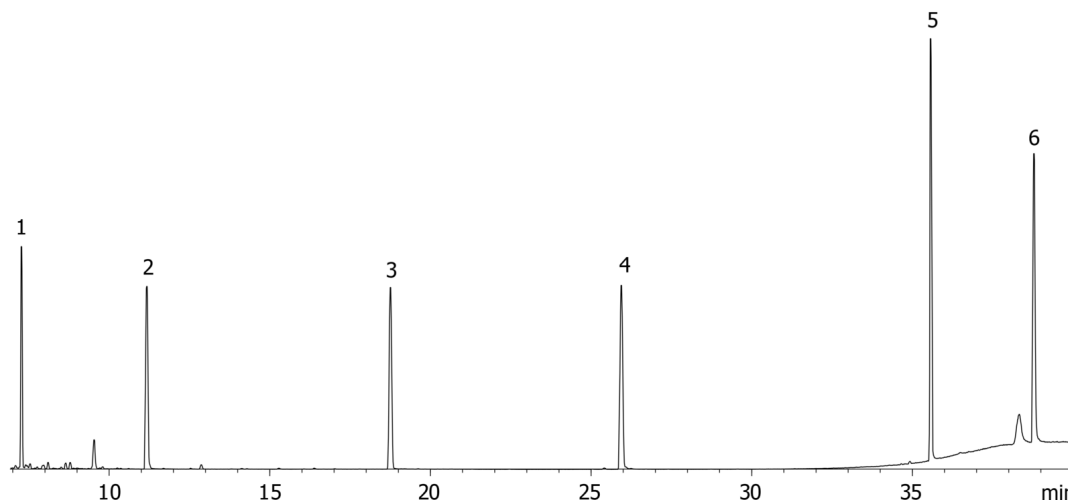


EPA 8270 Internal Standard Mix on ZB-35

Column: Zebtron™ ZB-35, GC Cap. Column 30 m x 0.25 mm x 0.25 μm, Ea
Phase: 35% Phenyl 65% Dimethylpolysiloxane
Dimensions: 30 meters x 0.25 mm x 0.25 μm
Order No: 7HG-G003-11
Oven Profile: 40 °C for 1 min to 100 °C @ 15 °C/min to 225 °C @ 5 °C/min to 320 °C @ 15 °C/min for 5 min
Carrier Gas: Constant Flow Helium, 0.8 mL/min
Injection: On-Column :1 0.5 μL @ 43°C
Detection: Mass Selective (MSD) (335°C)
Analyst Note: Analytes 10 ppm in Acetone



Products used in this application:



ANALYTES:

- 1 1,4-Dichlorobenzene-d4
- 2 Naphthalene-d8
- 3 Acenaphthene-d10
- 4 Phenanthrene-d10
- 5 Chrysene-d12
- 6 Perylene-d12

