

GC Application

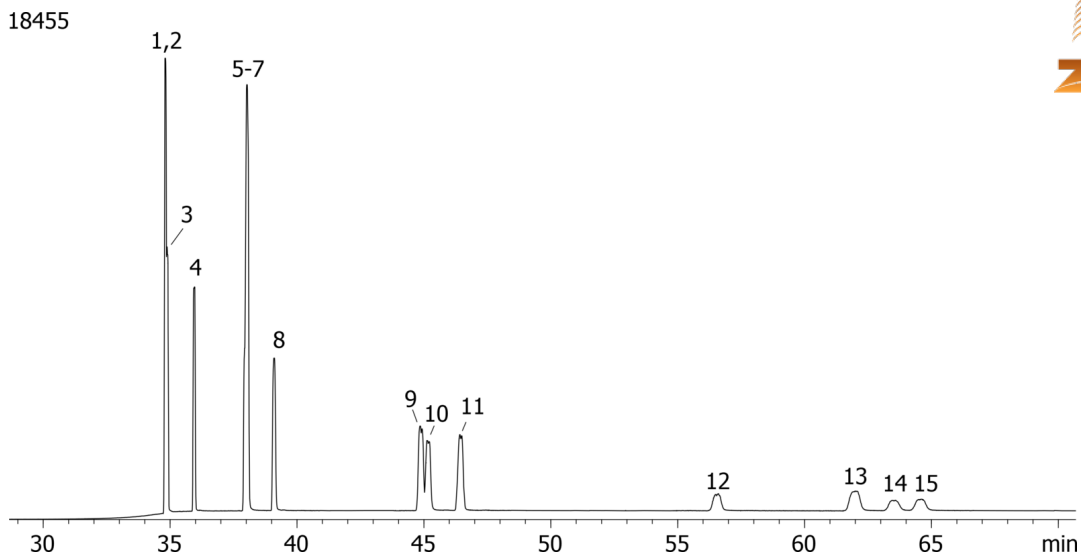
ID No.: 18455

European PAH Mix # 2 on ZB-1701P

Column: Zebtron™ ZB-1701, GC Cap. Column 30 m x 0.25 mm x 0.25 μm, Ea
Phase: 14% Cyanopropylphenyl 86% Dimethylpolysiloxane
Dimensions: 30 meters x 0.25 mm x 0.25 μm
Order No: 7HG-G006-11
Oven Profile: 40 °C for 1 min to 100 °C @ 15 °C/min to 225 °C @ 5 °C/min to 290 °C @ 15 °C/min for 40 min
Carrier Gas: Constant Flow Helium, 0.8 mL/min
Injection: On-Column :1 0.5 μL @ 43°C
Detection: Mass Selective (MSD) (335°C)
Analyst Note: Analytes 10 ppm in Acetone



Products used in this application:



European PAH Mix # 2 on ZB-1701P

ANALYTES:

- 1 Benz[a]anthracene
- 2 Cyclopenta(c,d)pyrene
- 3 Chrysene
- 4 5-Methylchrysene
- 5 Benzo[j]fluoranthene
- 6 Benzo[b]fluoranthene
- 7 Benzo[k]fluoranthene
- 8 Benzo[a]pyrene
- 9 Dibenz[a,h]anthracene
- 10 Indeno[1,2,3-cd]pyrene
- 11 Benzo[g,h,i]perylene
- 12 Dibenzo[a,l]pyrene
- 13 Dibenzo[a,e]pyrene
- 14 Dibenzo[a,i]pyrene
- 15 Dibenzo[a,h]pyrene

