

HPLC Application

ID No.: 18456

Methadone on Lux 5 um Cellulose-2 250 x 4.6

Column: Lux[®] 5 µm Cellulose-2, LC Column 250 x 4.6 mm, Ea

Dimensions: 250 x 4.6 mm ID

Order No: 00G-4457-E0

Elution Type: Isocratic

Eluent A: 0.5 % DEA in Hexane

Eluent B: 0.5 % DEA in Ethanol

Gradient Profile:	Step No.	Time (min)	Pct A	Pct B
	1	0	99	1

Flow Rate: 1 mL/min

Col. Temp.: 20 °C

Detection: UV-Vis Abs.-Variable Wave.(UV) @ 210 nm (ambient)

Detector Info: Customer submitted application 10APR09 - Jason Lam (alpha = 1.27)

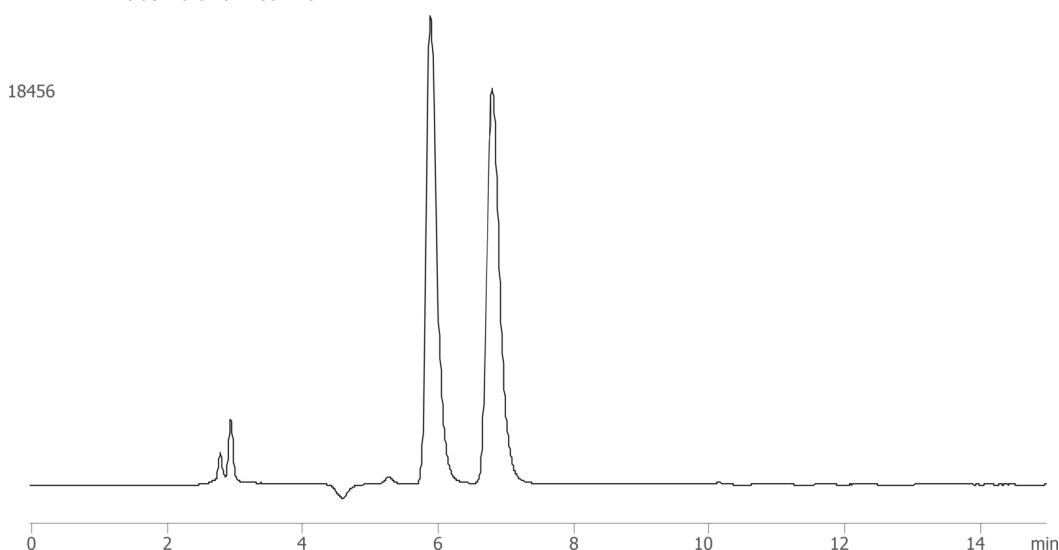
Analyst Note: SecurityGuard[™] Guard Cartridge System extends column lifetime.

- SecurityGuard Cartridges, Lux Cellulose-2, 4 x 3.0mm, 10/Pk Part No.: AJ0-8366

- Holder Part No.: KJ0-4282



Products used in this application:



ANALYTES:

1 Methadone

Retention Time: 5.892 min

2 Methadone

Retention Time: 6.802 min

