

HPLC Application

ID No.: 18457

Sulfonamides on Gemini 5u, C18, 150x3.0

Column: Gemini[®] 5 µm C18 110 Å, LC Column 150 x 3 mm, Ea

Dimensions: 150 x 3 mm ID

Order No: 00F-4435-Y0

Elution Type: Gradient

Eluent A: 0.1% Formic acid/water

Eluent B: 0.1% formic acid/ACN

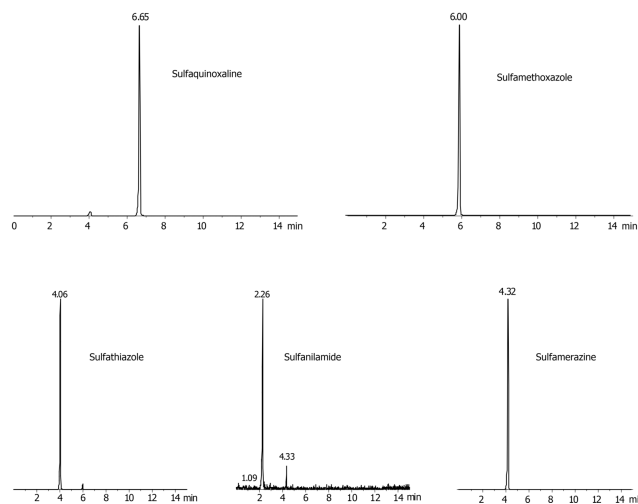
Gradient Profile:	Step No.	Time (min)	Pct A	Pct B
	1	0	90	10
	2	8	30	70

Flow Rate: 0.6 mL/min

Col. Temp.: ambient

Detection: Mass Spectrometer (MS) @ amu (ambient)

Analyst Note: HPLC system: HP 1100 MS detector: API 3000, LC/MS/MS, Turbo spray: ESI, positive ion mode; MRM; heater gas flow 70 L/min, heater temp: 175°C



ANALYTES:

- 1 Sulfanilamide**
Retention Time: 2.26 min
- 2 Sulfathiazole**
Retention Time: 4.08 min
- 3 Sulfamerazine**
Retention Time: 4.31 min
- 4 Sulfamethoxazole**
Retention Time: 6.01 min
- 5 Sulfaquinoxaline**
Retention Time: 6.66 min



Products used in this application:

