

## Extraction of Sulfonamides from Honey by LC/MS/MS Using strata X-C and Gemini 5u, C18, 150x3.0

**Column:** Gemini® 5 µm C18 110 Å, LC Column 150 x 3 mm, Ea

**Dimensions:** 150 x 3 mm ID

**Order No:** 00F-4435-Y0

**Elution Type:** Gradient

**Eluent A:** 0.1% Formic acid/water

**Eluent B:** 0.1% formic acid/ACN

Gradient Profile:	Step No.	Time (min)	Pct A	Pct B
	1	0	90	10
	2	8	30	70

**Flow Rate:** 0.6 mL/min

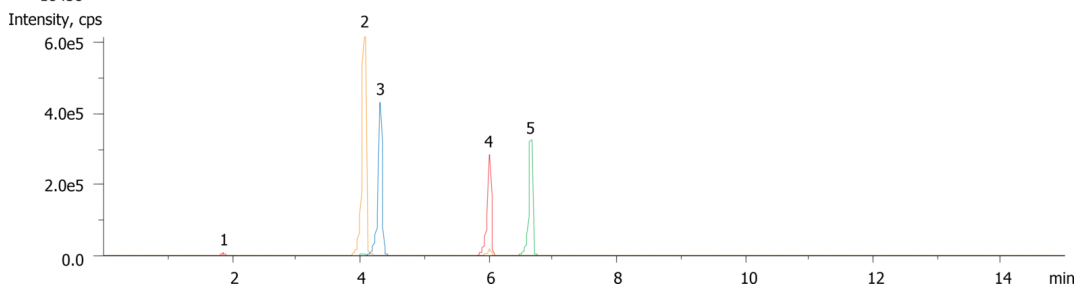
**Col. Temp.:** ambient

**Detection:** Mass Spectrometer (MS) @ amu (ambient)

**Analyst Note:** HPLC system: HP 1100 MS detector: API 3000, LC/MS/MS, Turbo spray: ESI, positive ion mode; MRM; heater gas flow 70 L/min, heater temp: 175°C



Products used in this application:



### ANALYTES:

- 1 Sulfanilamide**  
Retention Time: 2.26 min
- 2 Sulfathiazole**  
Retention Time: 4.08 min
- 3 Sulfamerazine**  
Retention Time: 4.31 min
- 4 Sulfamethoxazole**  
Retention Time: 6.01 min
- 5 Sulfaquinoxaline**  
Retention Time: 6.66 min

