

Extraction of Metanephrine and Normetanephrine from Plasma On strata X-CW Using Luna HILIC

Column: Luna® 3 µm HILIC 200 Å, LC Column 50 x 2 mm, Ea
Dimensions: 50 x 2 mm ID
Order No: 00B-4449-B0
Elution Type: Gradient
Eluent A: 95/5 ACN/100 mM ammonium formate, pH 3.2
Eluent B: 50/45/5 ACN/Water/100 mM ammonium formate, pH 3.2

Gradient Profile:	Step No.	Time (min)	Pct A	Pct B
	1	0	100	0
	2	2.5	100	0
	3	2.51	0	100
	4	3	0	100
	5	3.01	100	0



Products used in this application:

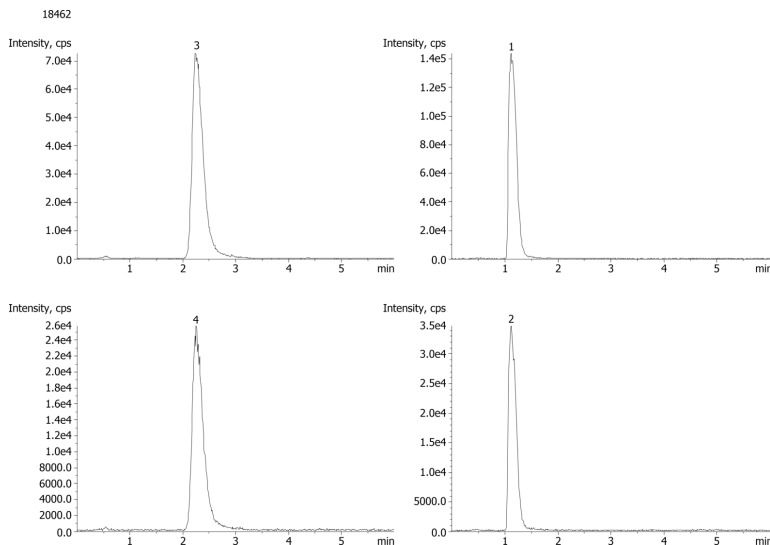


Flow Rate: 0.4 mL/min
Col. Temp.: ambient
Detection: Mass Spectrometer (MS) @ (ambient)
Analyst Note: LC/MS/MS & Chromatographic Condition

MS Detector: API 3000 LC/MS/MS with ESI (TurboIonSpray®) (www.Appliedbiosystems.com), Positive Ion Mode; MRM; heater gas flow 7000 cc/min; heater temperature 550 °C; Column: LUNA 3µm HILIC, 50x2.0mm; Flow rate: 0.4ml/min
 ESI Source Conditions:

NEB: 9.00
 CUR: 10.00
 IS: 3500.00
 TEM: 550.00
 CAD: 11.00
 CE: 23.00 Normetanephrine
 CE: 25.00 Metanephrine

Analyte	Q1	Q3	Time	DP	FP	CE	CXP
NMN	166.4	134.2	150	61	370	23	8
MN	180.4	148.2	150	71	370	25	8



Extraction of Metanephrine and Normetanephrine from Plasma On strata X-CW Using Luna HILIC

ANALYTES:

- 1 Metanephrine
- 2 Metanephrine-d3
- 3 Normetanephrine
- 4 Normetanephrine-d3

