

Malachite Green and Related Dyes on Luna HST 2.5um C18(2) 50x2.0 Column

Column: Luna® 2.5 µm C18(2) 100 Å, LC Column 50 x 2 mm, Ea

Dimensions: 50 x 2 mm ID

Order No: 00B-4446-B0

Elution Type: Isocratic

Eluent A: 0.1% Formic acid in water

Eluent B: 0.1% Formic acid in 75:25 acetonitrile:methanol

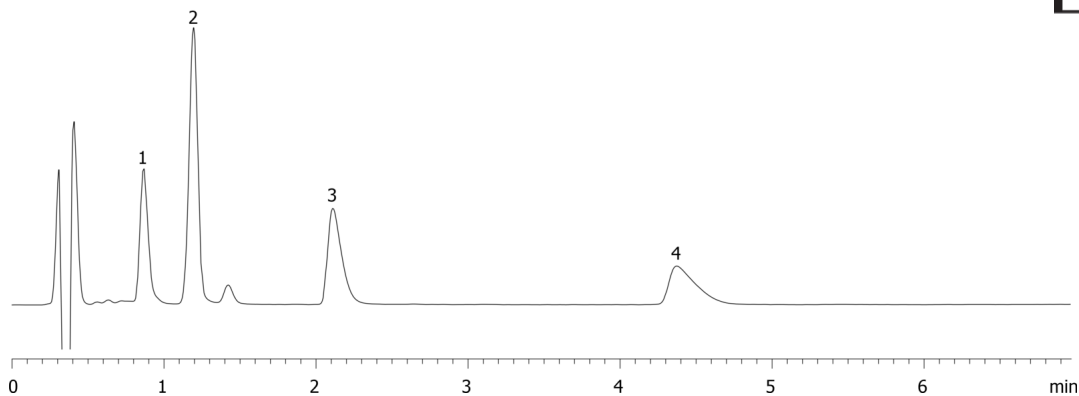
| Gradient Profile: | Step No. | Time (min) | Pct A | Pct B |
|-------------------|----------|------------|-------|-------|
| | 1 | 5 | 55 | 45 |

Flow Rate: 0.4 mL/min

Col. Temp.: ambient

Detection: UV-Vis Abs.-Variable Wave.(UV) @ 210 nm (ambient)

18464



Products used in this application:



ANALYTES:

- 1 Malachite Green**
Retention Time: 0.866 min
- 2 Leucomalachite Green**
Retention Time: 1.194 min
- 3 Crystal violet**
Retention Time: 2.11 min
- 4 Brilliant Green**
Retention Time: 4.37 min

